



**EXTERIOR PERSPECTIVE**

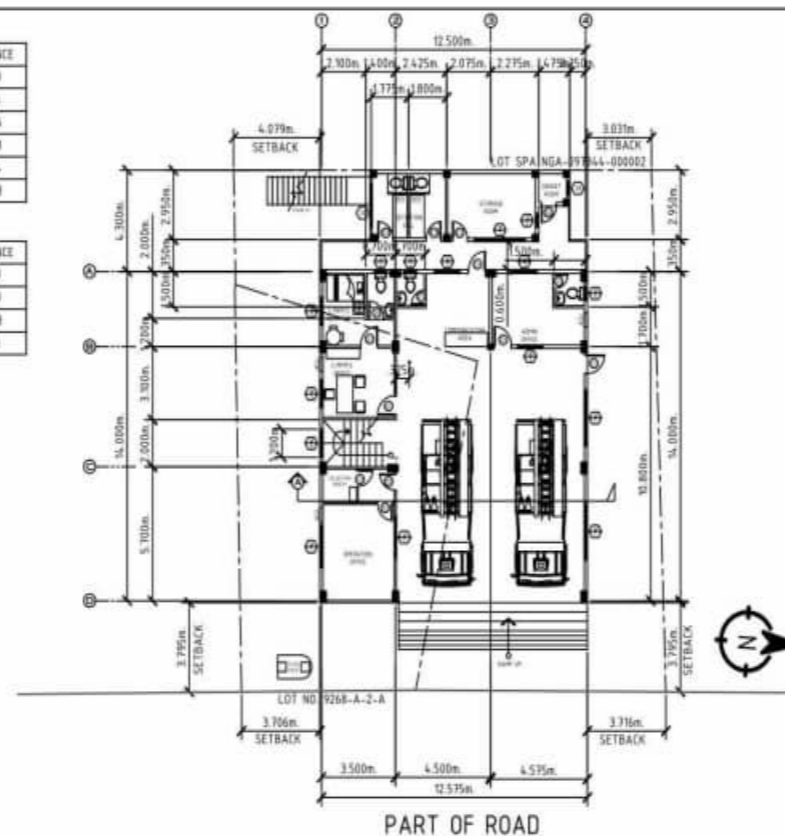


**LOCATION PLAN**

POINTS	BEARING	DISTANCE
1 - 2	S 12° 45' W	11.89
2 - 3	S 95° 50' W	4.86
3 - 4	N 03° 07' W	19.76
4 - 5	N 85° 08' E	22.18
5 - 6	S 02° 43' E	11.84
6 - 1	N 81° 17' W	14.28

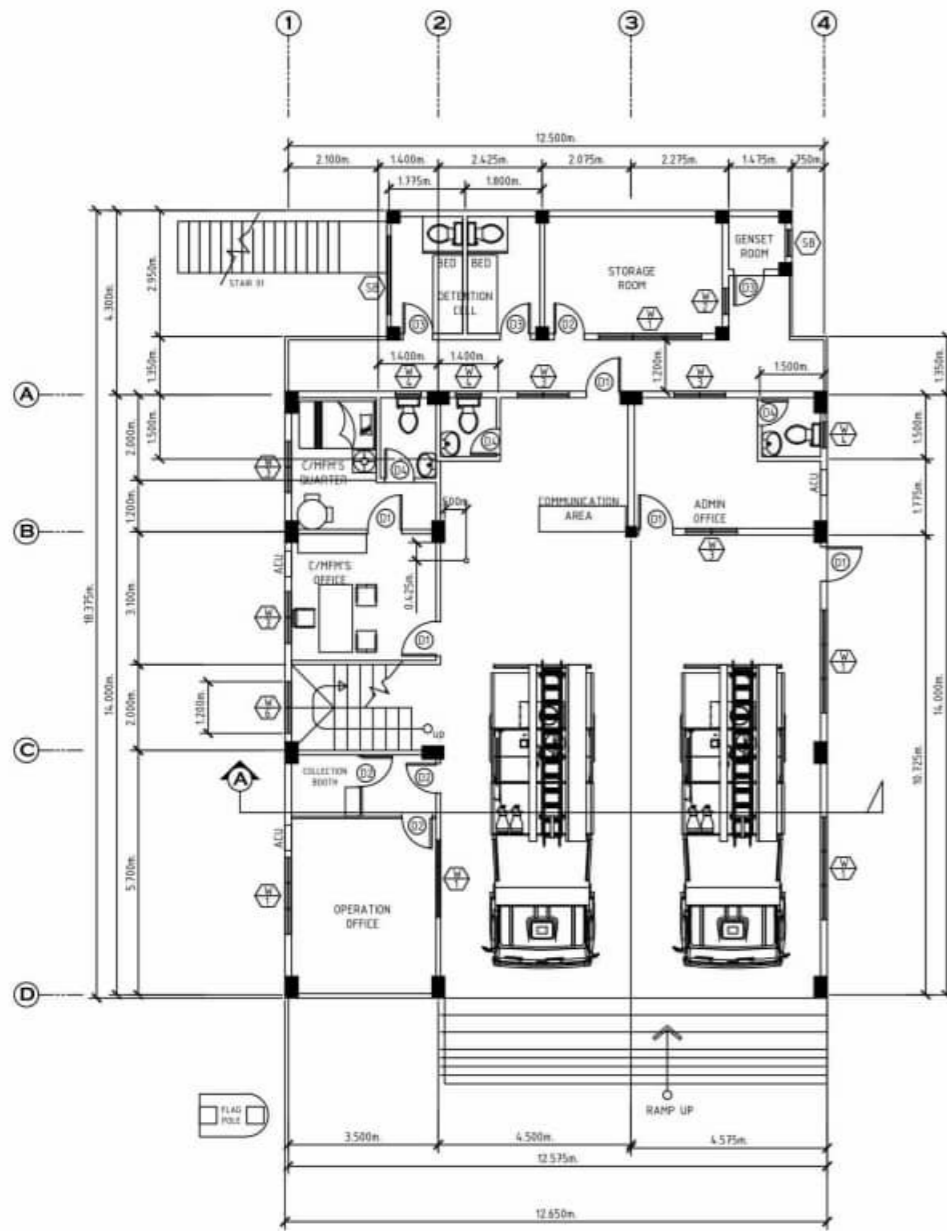
POINTS	BEARING	DISTANCE
1 - 2	S 85° 50' W	11.11
2 - 3	N 12° 4' E	11.89
3 - 4	S 81° 17' E	14.28
4 - 1	S 02° 43' E	8.23



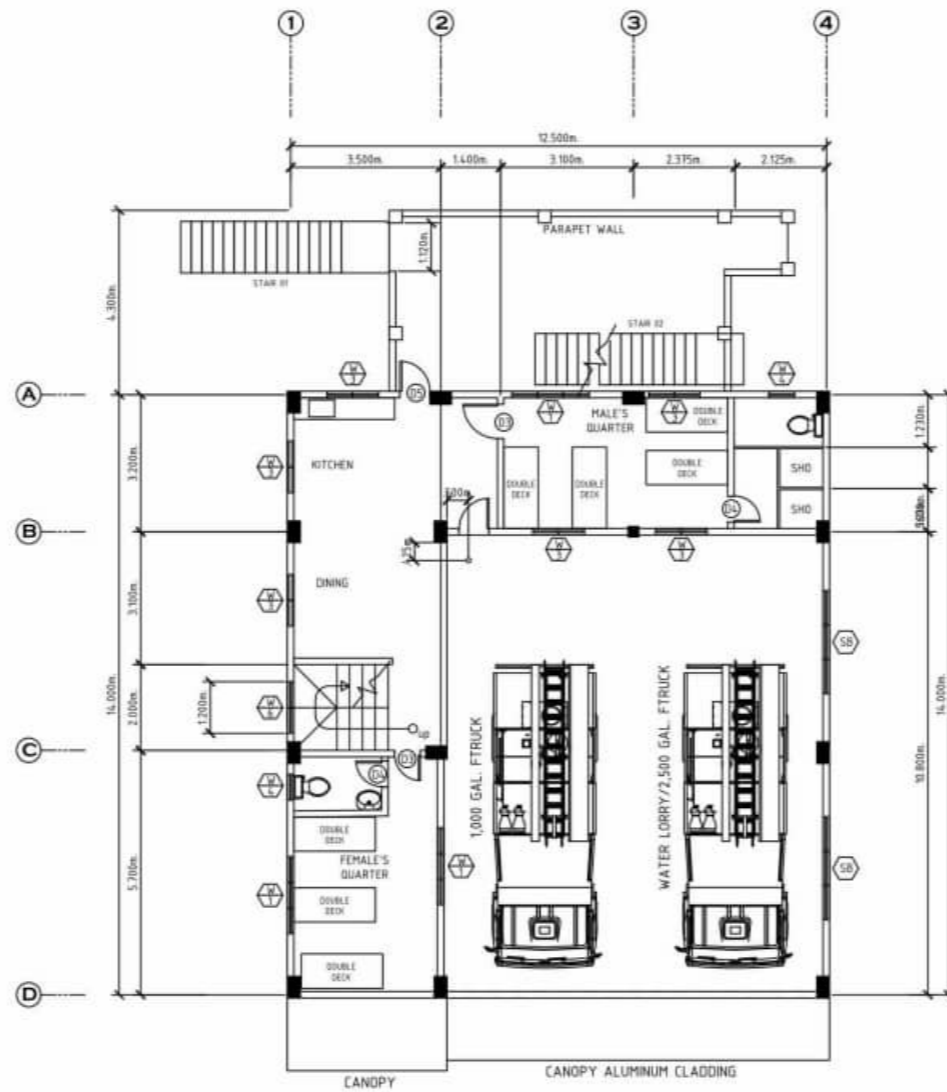
**SITE DEVELOPMENT PLAN**  
SCALE: 1:200

ARCHITECTURAL		TABLE OF CONTENT
1	18	<ul style="list-style-type: none"> <li>• PERSPECTIVE</li> <li>• SITE DEVELOPMENT PLAN</li> <li>• LOCATION PLAN</li> </ul>
2	19	<ul style="list-style-type: none"> <li>• GROUND FLOOR PLAN</li> <li>• MEZZANINE FLOOR PLAN</li> <li>• ROOF DECK PLAN</li> </ul>
3	19	<ul style="list-style-type: none"> <li>• GROUND FLOOR PAVING PATTERN</li> <li>• MEZZANINE FLOOR PAVING PATTERN</li> <li>• ROOF DECK PAVING PATTERN</li> </ul>
4	19	<ul style="list-style-type: none"> <li>• FRONT ELEVATION &amp; RIGHT SIDE ELEVATION</li> <li>• REAR ELEVATION &amp; LEFT SIDE ELEVATION</li> <li>• SECTION @ "A"</li> </ul>
5	19	<ul style="list-style-type: none"> <li>• ROOF PLAN, TYPICAL STAIRCASE DETAIL</li> <li>• SCHEDULE OF DOORS AND WINDOWS</li> <li>• DETAILS OF TOILET AND BATH</li> </ul>
6	19	<ul style="list-style-type: none"> <li>• REFLECTED CEILING PLAN (GROUND FLOOR)</li> <li>• REFLECTED CEILING PLAN (MEZZANINE FLOOR)</li> <li>• REFLECTED CEILING PLAN (ROOF DECK)</li> </ul>
7	19	<ul style="list-style-type: none"> <li>• CABINET DRAWER DETAIL</li> <li>• SHELVES DETAIL</li> <li>• PPE CABINET DETAIL</li> <li>• CABINET DETAIL</li> </ul>
8	19	<ul style="list-style-type: none"> <li>• FLAG POLE DETAILS</li> <li>• ENTRANCE CANOPY DETAILS</li> <li>• ENTRANCE LOGO DETAILS</li> </ul>
9	19	<ul style="list-style-type: none"> <li>• CONCRETE FENCE LAYOUT PLAN</li> <li>• TYPICAL FENCE ELEVATION</li> </ul>
10	19	<ul style="list-style-type: none"> <li>• FOUNDATION PLAN</li> <li>• MEZZANINE FLOOR FRAMING PLAN</li> <li>• ROOF DECK BEAM PLAN</li> <li>• TIE-BEAM SCHEDULE</li> <li>• COLUMN SCHEDULE &amp; BEAM SCHEDULE</li> </ul>
11	19	<ul style="list-style-type: none"> <li>• DETAIL OF COLUMN AND FOOTING</li> <li>• DETAIL OF TYPICAL S-1 (TWO-WAY SLAB)</li> <li>• DETAIL OF TYPICAL S-2 (ONE-WAY SLAB)</li> <li>• TYPICAL STAIR DETAIL</li> <li>• SCHEDULE OF FOOTING</li> <li>• DETAIL OF WALL FOOTING</li> <li>• DETAIL OF FLOOR LINTEL BEAM</li> </ul>
12	19	<ul style="list-style-type: none"> <li>• ROOF FRAMING PLAN</li> <li>• DETAIL OF STEEL TRUSSES</li> <li>• DETAIL OF FASCIA HOLDER</li> <li>• DETAIL OF STRUT GUTTER</li> <li>• DETAIL OF TYPICAL TIE-BEAM</li> <li>• DETAIL OF REINFORCEMENT LAYOUT OF TOP &amp; BOTTOM EXTRA BARS</li> <li>• DETAIL SECTION OF TYPICAL BEAM</li> </ul>
13	19	• STRUCTURAL NOTES
14, 15	19	<ul style="list-style-type: none"> <li>• PLUMBING LAYOUT PLAN: G.F. &amp; S.F.</li> <li>• DRAIN, WASTE &amp; VENT. PIPE LINE</li> <li>• PLUMBING LAYOUT PLAN: G.F. &amp; S.F.</li> <li>• WATER PIPE LINE</li> <li>• PLUMBING SCHEMATIC DIAGRAM (WASTE)</li> <li>• PLUMBING SCHEMATIC DIAGRAM (WATER)</li> <li>• DETAIL OF SEPTIC TANK</li> <li>• DETAIL OF MANHOLE COVER</li> <li>• TYPICAL DETAIL OF RAINWATER COLLECTOR</li> <li>• DETAIL OF DRAIN FILED</li> <li>• LEGENDS, GENERAL NOTES</li> </ul>
16, 17, 18, 19	19	<ul style="list-style-type: none"> <li>• G.F. ELECTRICAL LIGHTING LAYOUT PLAN</li> <li>• S.F. ELECTRICAL LIGHTING LAYOUT PLAN</li> <li>• R.D. ELECTRICAL LIGHTING LAYOUT PLAN</li> <li>• G.F. ELECTRICAL POWER LAYOUT PLAN</li> <li>• S.F. ELECTRICAL POWER LAYOUT PLAN</li> <li>• R.D. ELECTRICAL POWER LAYOUT PLAN</li> <li>• SCHEDULE OF LOADS</li> <li>• SINGLE LINE WIRING DIAGRAM</li> <li>• FAULT ANALYSIS, LEGEND, GENERAL NOTES</li> </ul>

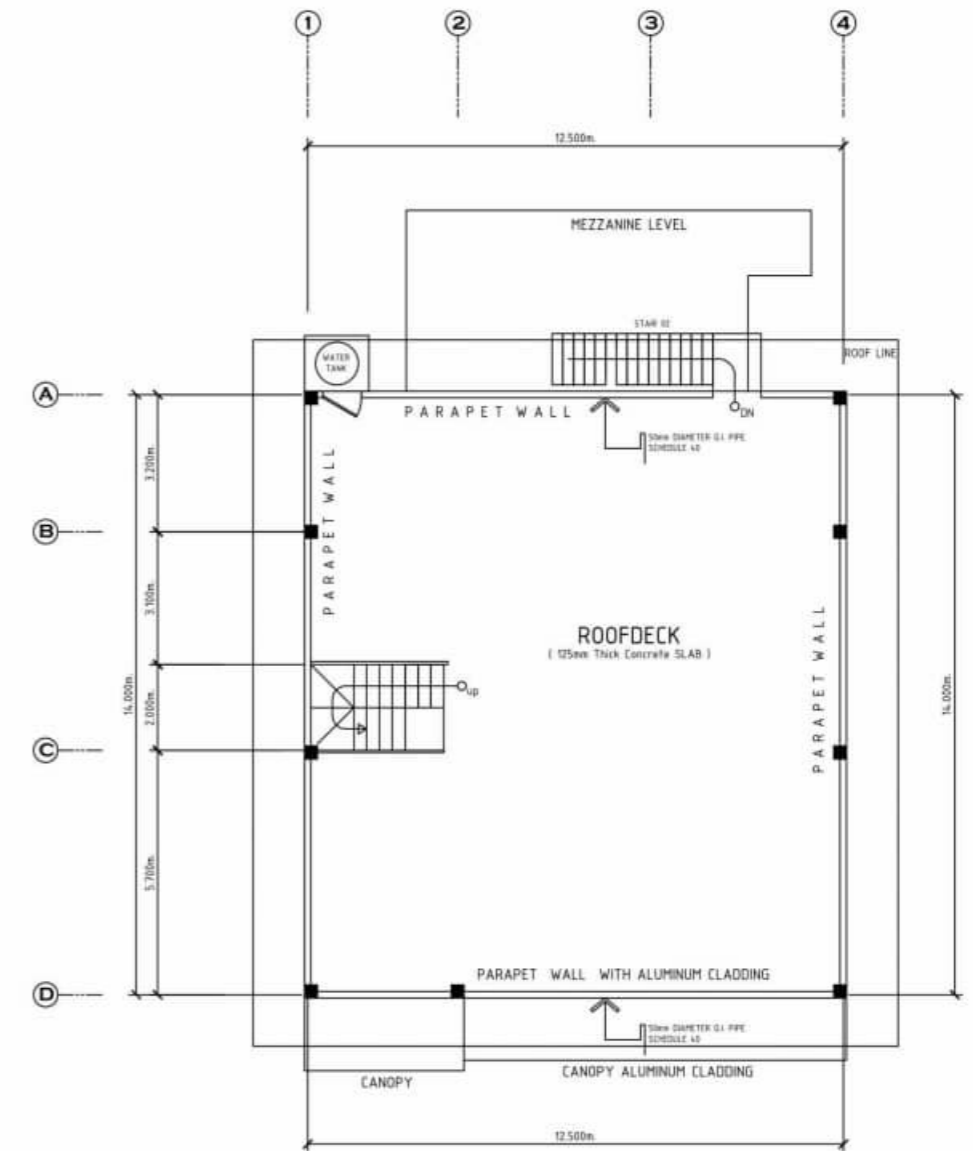
<p><b>BUREAU OF FIRE PROTECTION REGION 9</b></p>	OWNER:	<p><b>1st PAMERON CONSTRUCTION</b></p>	Project Title:	Submitted By:	Checked By:	Approved By:	Sheet Contents:	SHEET NO.
	<p><b>DESIGN &amp; BUILD OF TIGBAO MUNICIPAL TYPICAL FIRE STATION WITH MEZZANINE &amp; COVERED ROOF DECK</b></p>		<p><b>FERNANDO Y. PAMERON</b> President / Gen. Manager</p>	<p><b>SUPT REGGY A OLMEDO</b> Chief, Logistics Division</p>	<p><b>CSUPT RENATO BADONG MARCIAL, DSC</b> Regional Director</p>	AS SHOWN	<p><b>S-1</b> 1-10</p>	



1 GROUND FLOOR PLAN  
SCALE: 1:100 H



2 MEZZANINE FLOOR PLAN  
SCALE: 1:100 H



3 ROOFDECK PLAN  
SCALE: 1:100 H



OWNER:  
**BUREAU OF FIRE PROTECTION  
REGION 9**



Project Title:  
**DESIGN & BUILD OF TIGBAO  
MUNICIPAL TYPICAL FIRE  
STATION WITH MEZZANINE &  
COVERED ROOF DECK**

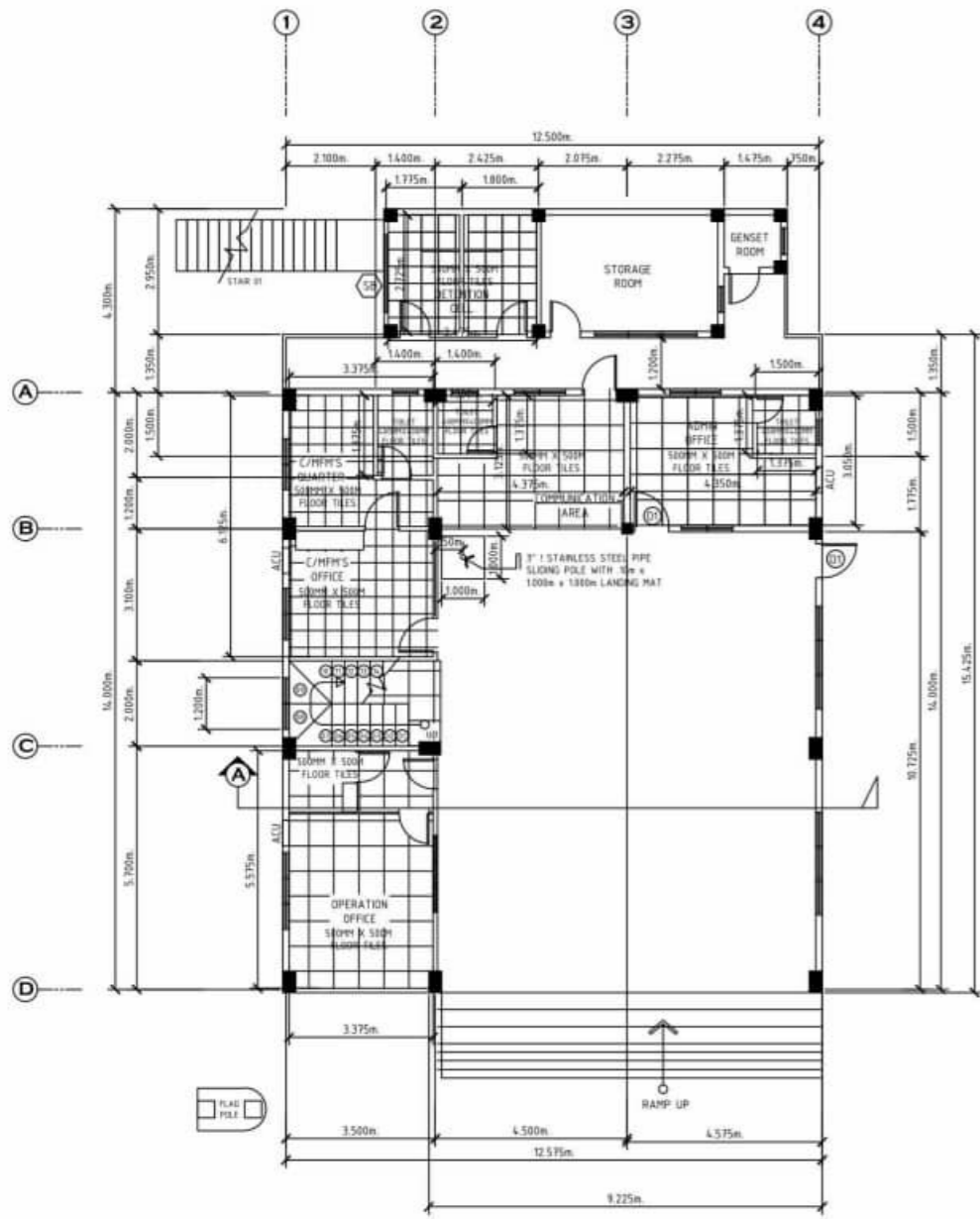
Submitted By:  
**FERNANDO Y. PAMERON**  
President / Gen. Manager

Checked By:  
**SUPT REGGY A OLMEDO**  
Chief, Logistics Division

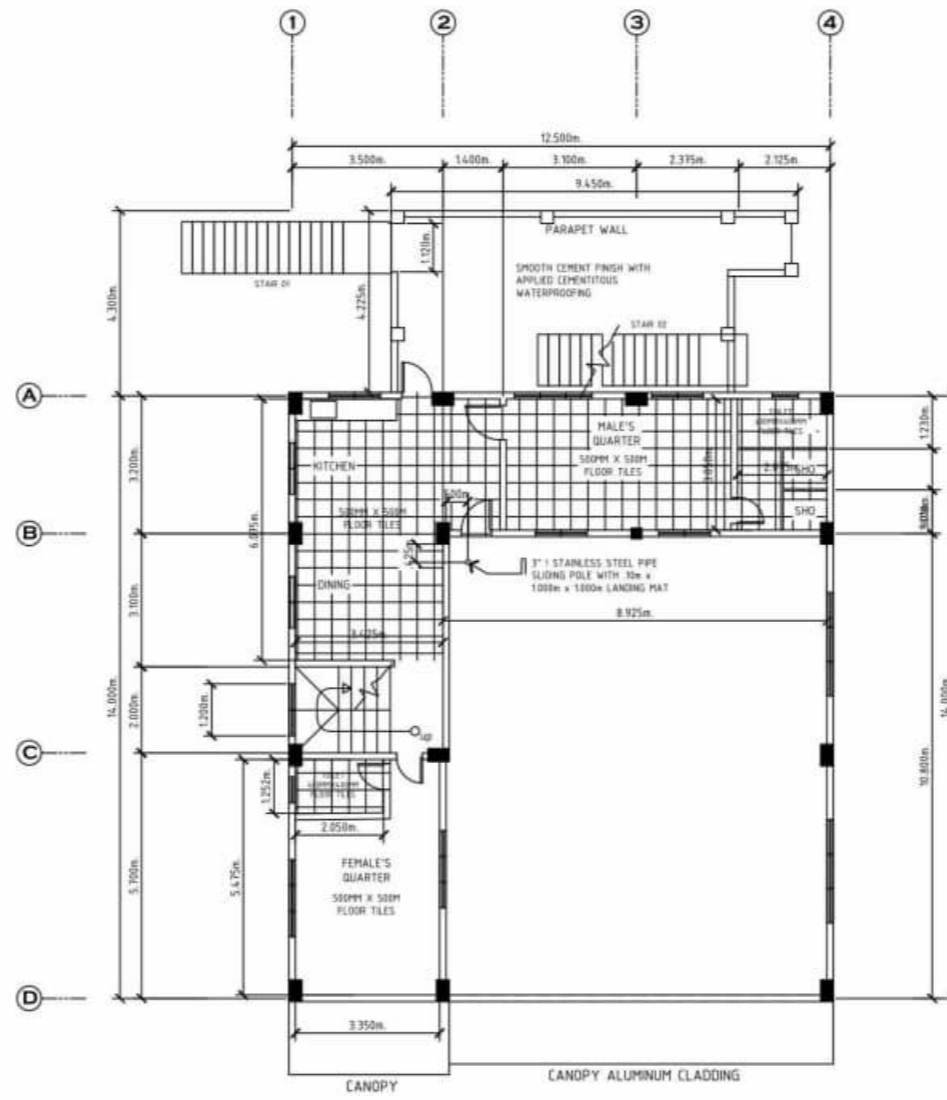
Approved By:  
**CSUPT RENATO BADONG MARCIAL, DSC**  
Regional Director

Sheet Contents:  
AS SHOWN

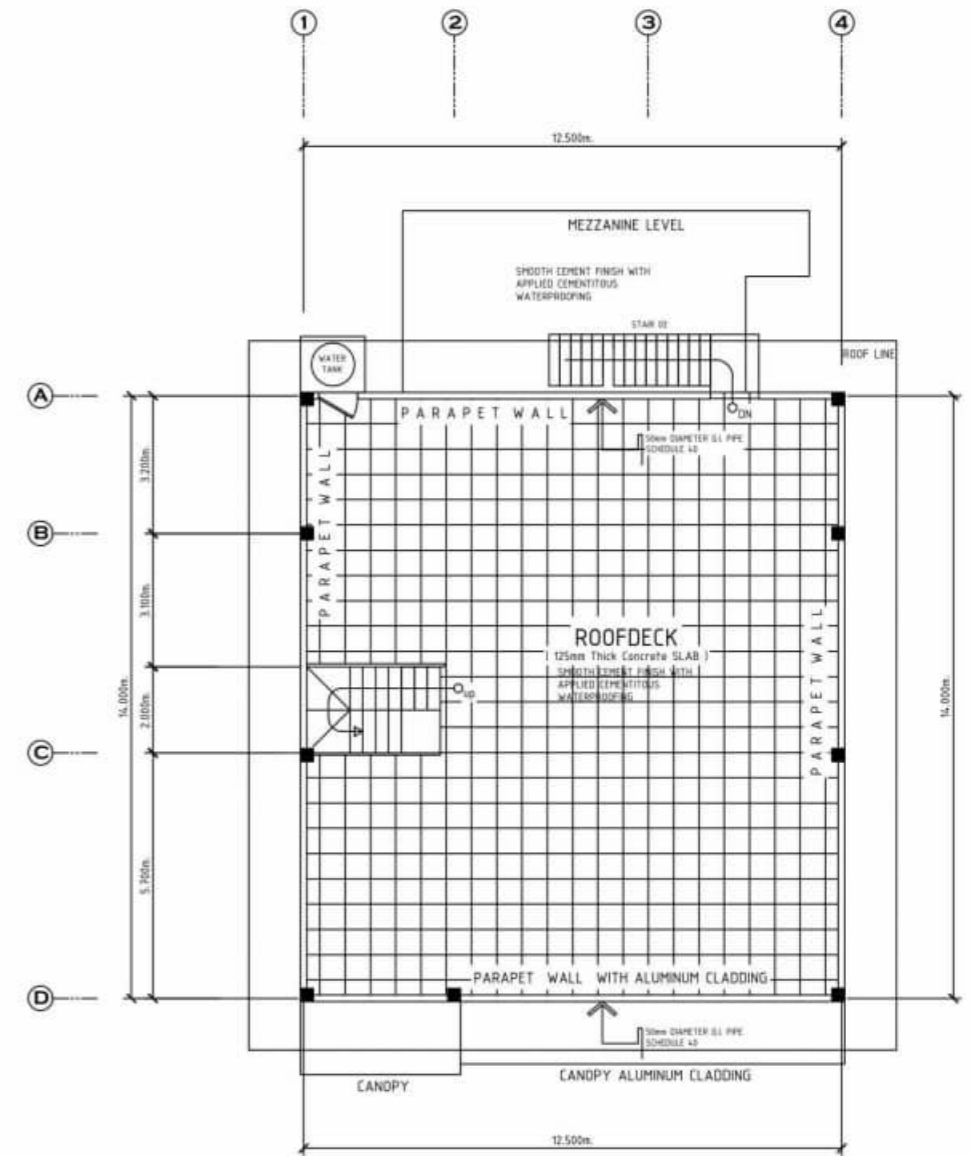
**S-1**  
**1-10**



1 GROUND FLOOR PAVING PATTERN  
SCALE: 1 : 100 M



1 MEZZANINE FLOOR PAVING PATTERN  
SCALE: 1 : 100 M



1 ROOF DECK FLOOR PAVING PATTERN  
SCALE: 1 : 100 M



OWNER:  
**BUREAU OF FIRE PROTECTION  
REGION 9**



Project Title:  
**DESIGN & BUILD OF TIGBAO  
MUNICIPAL TYPICAL FIRE  
STATION WITH MEZZANINE &  
COVERED ROOF DECK**

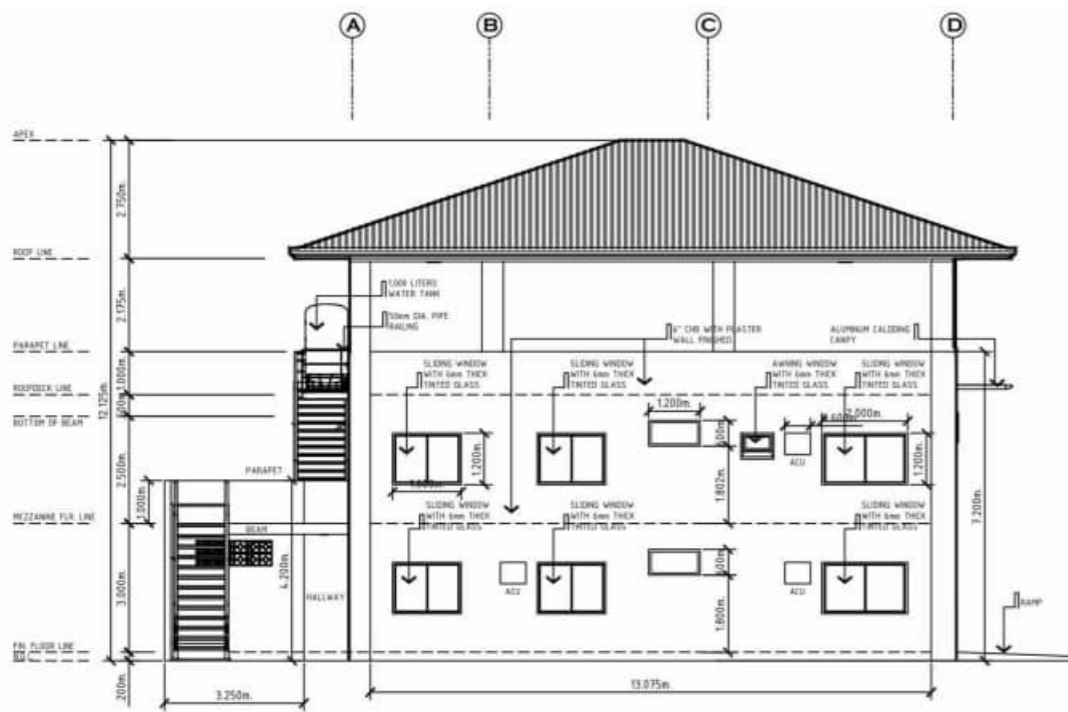
Submitted By:  
**FERNANDO Y. PAMERON**  
President / Gen. Manager

Checked By:  
**SUPT REGGY A OLMEDO**  
Chief, Logistics Division

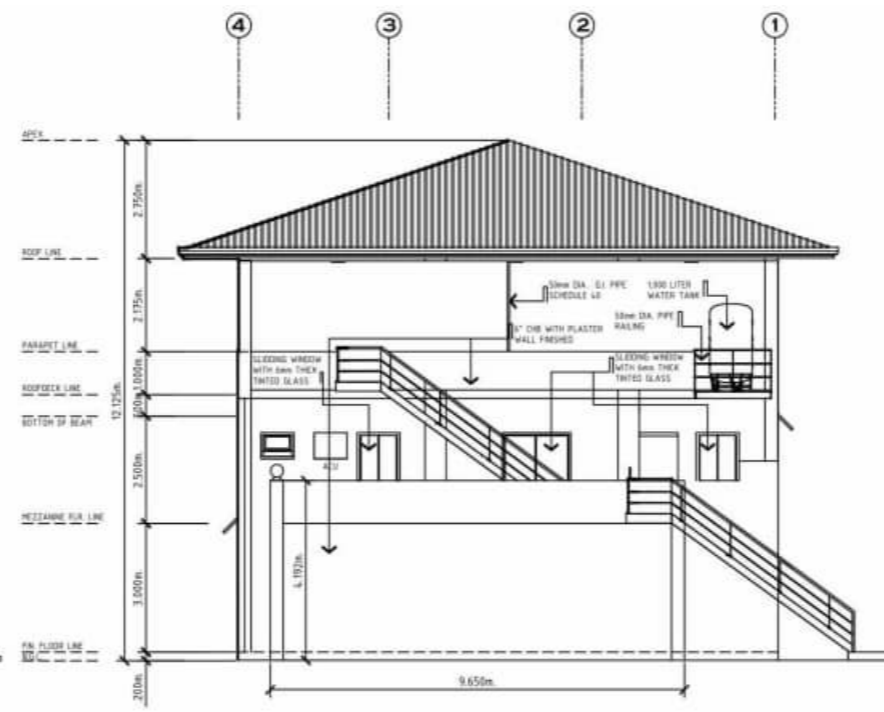
Approved By:  
**CSUPT RENATO BADONG MARCIAL, DSC**  
Regional Director

Sheet Contents:  
AS SHOWN

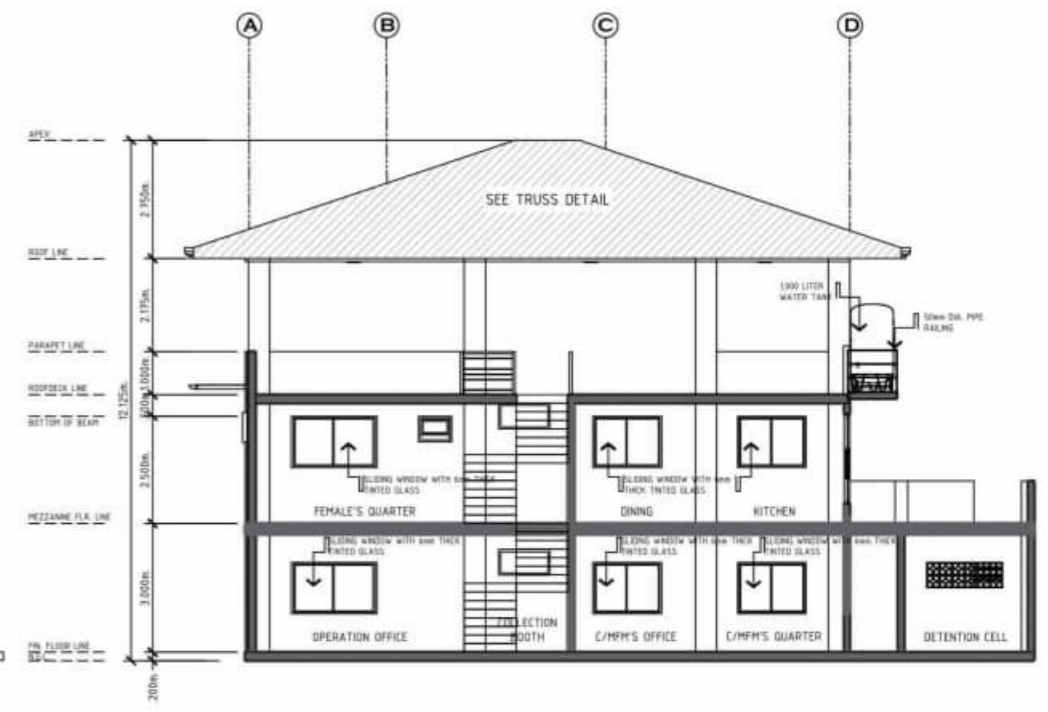
SHEET NO.  
**S-1**  
1-10



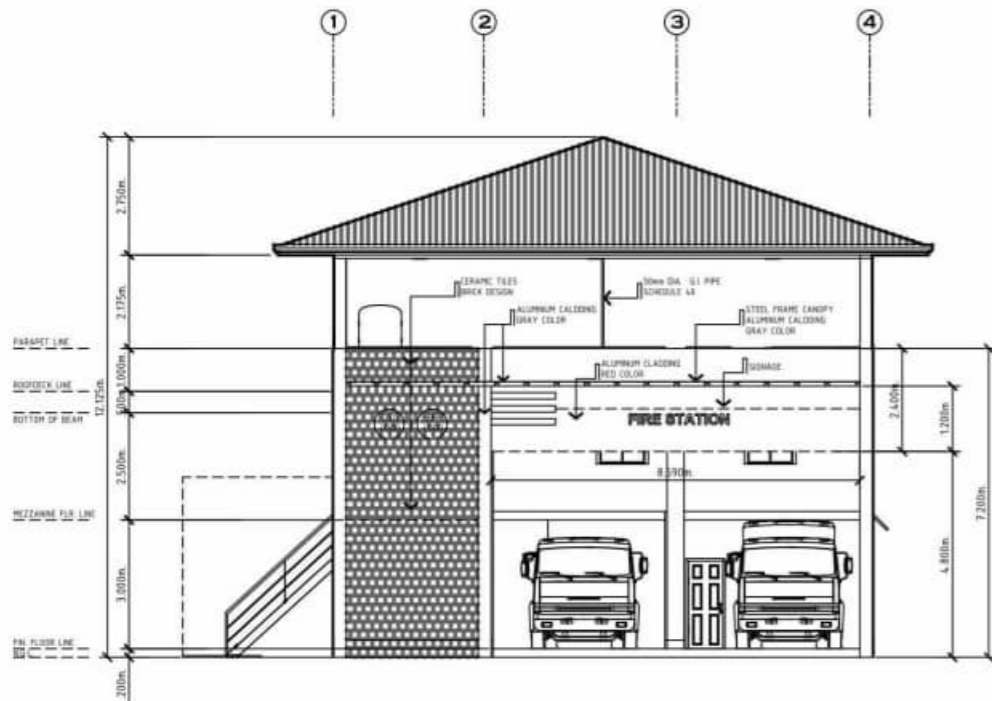
3 LEFT SIDE ELEVATION  
SCALE: 1 : 100 M



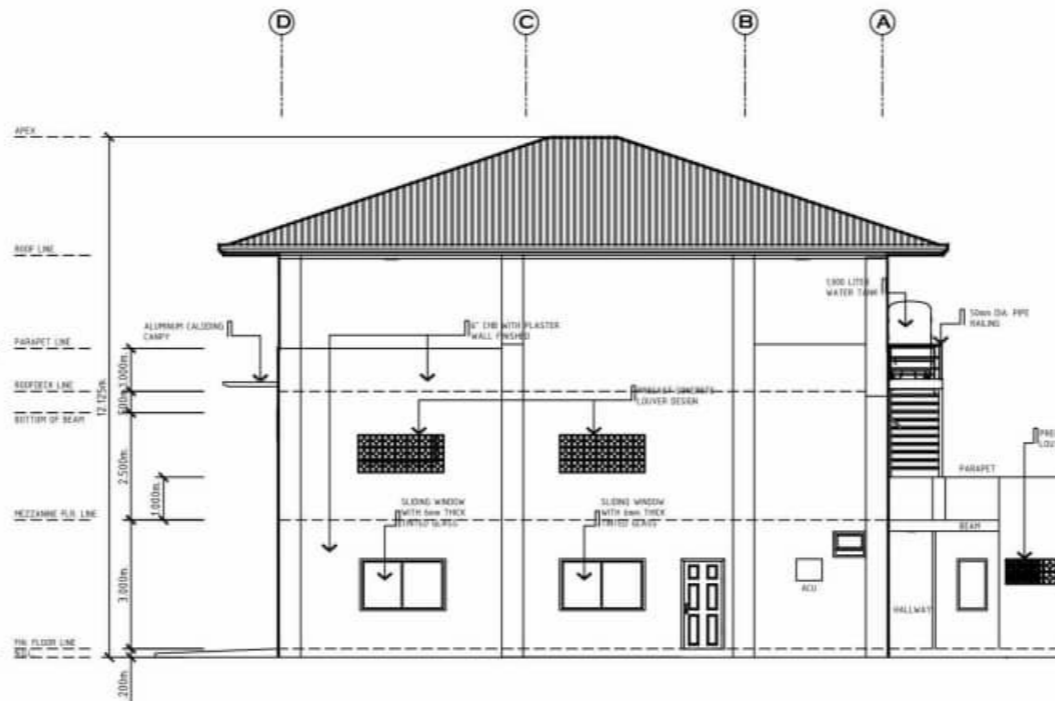
4 REAR ELEVATION  
SCALE: 1 : 100 M



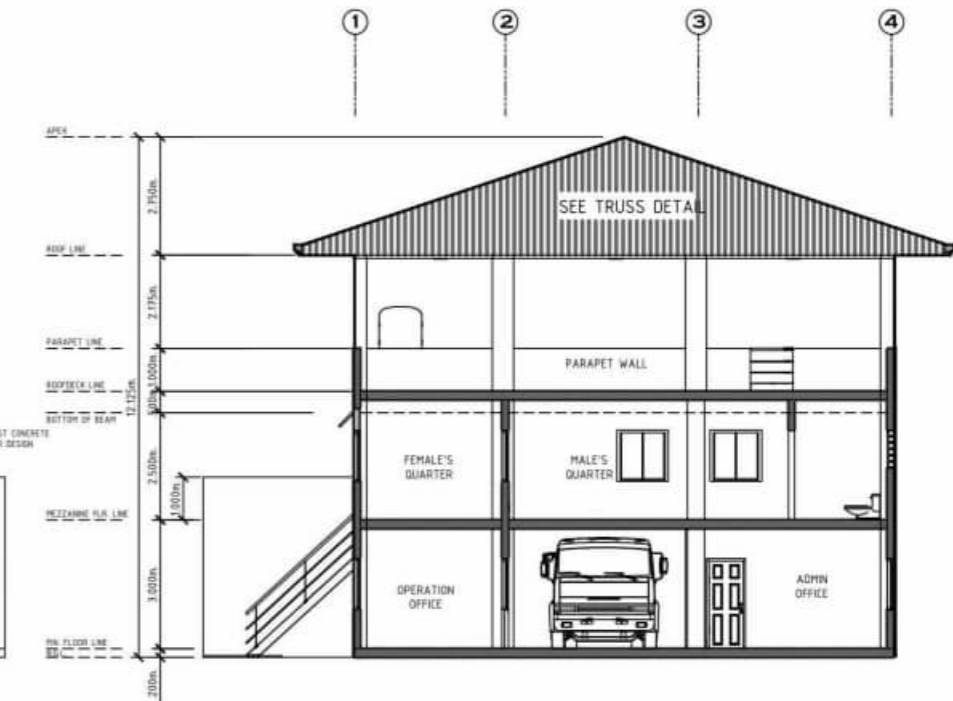
5 SECTION @ "B"  
SCALE: 1 : 100 M



1 FRONT ELEVATION  
SCALE: 1 : 100 M



2 RIGHT SIDE ELEVATION  
SCALE: 1 : 100 M



5 SECTION @ "A"  
SCALE: 1 : 100 M



OWNER:  
**BUREAU OF FIRE PROTECTION  
REGION 9**



Project Title:  
**DESIGN & BUILD OF TIGBAO  
MUNICIPAL TYPICAL FIRE  
STATION WITH MEZZANINE &  
COVERED ROOF DECK**

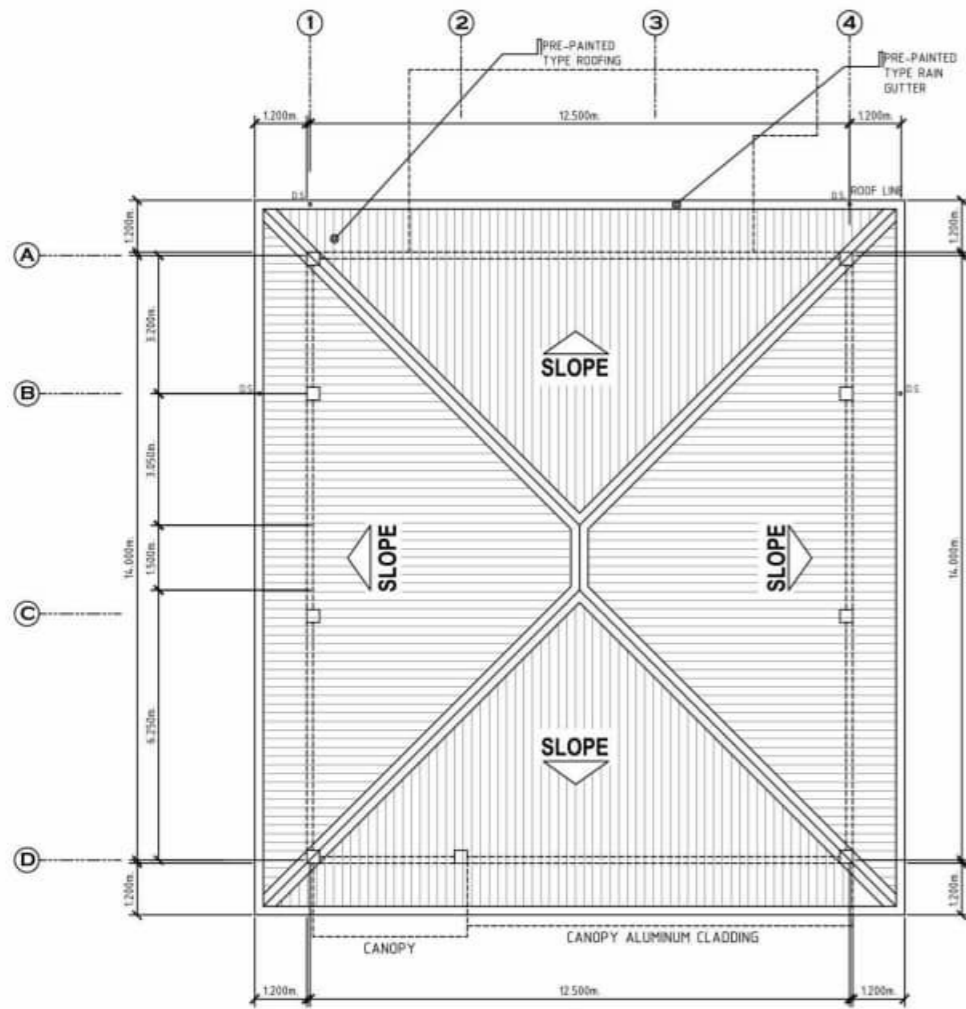
Submitted By:  
**FERNANDO Y. PAMERON**  
President / Gen. Manager

Checked By:  
**SUPT REGGY A OLMEDO**  
Chief, Logistics Division

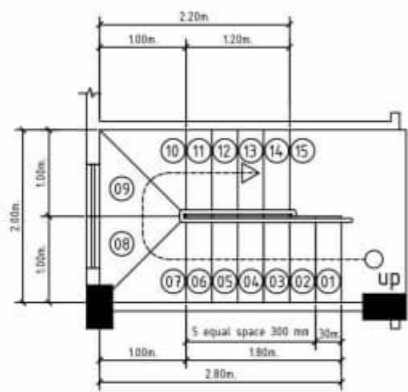
Approved By:  
**CSUPT RENATO BADONG MARCIAL, DSC**  
Regional Director

Sheet Contents:  
AS SHOWN

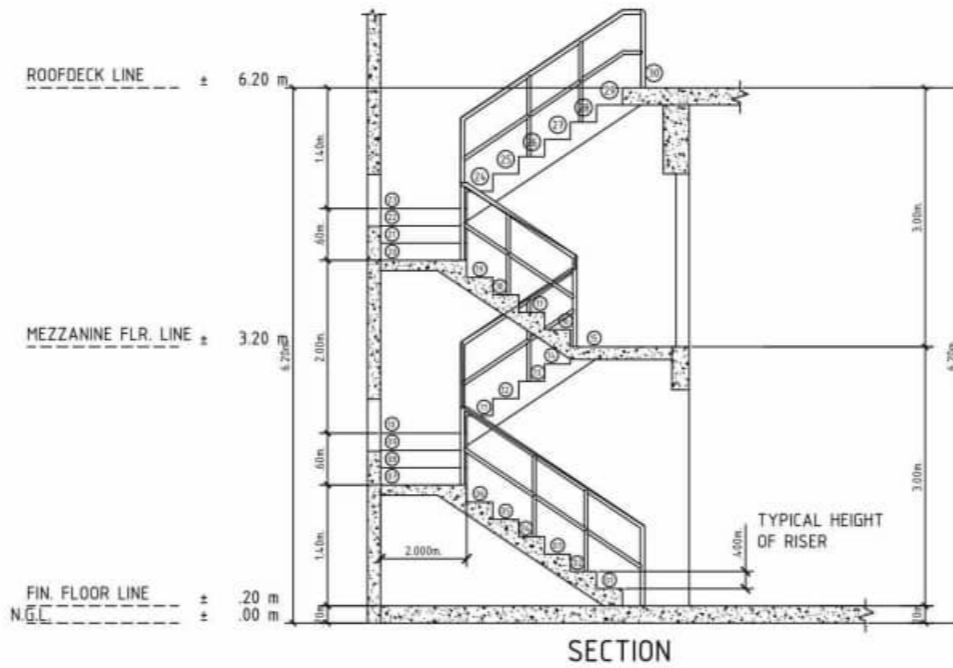
SHEET NO.  
**S-1  
1-10**



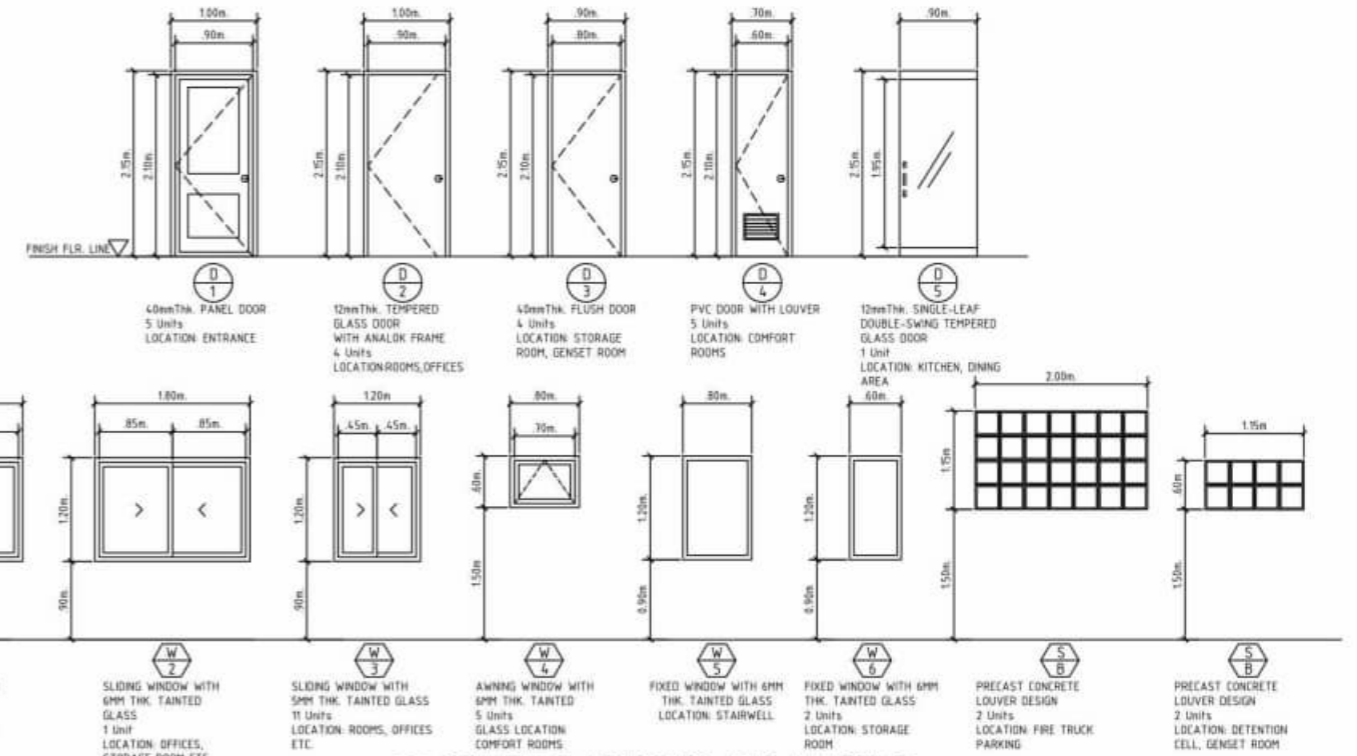
1 ROOF PLAN  
SCALE: 1 : 100 M



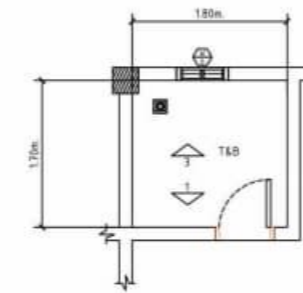
2 TYPICAL STAIRCASE DETAIL  
SCALE: 1 : 50 M



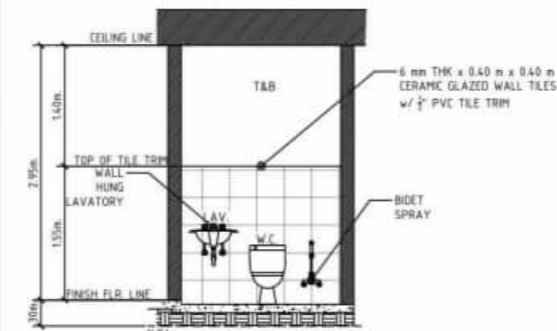
SECTION



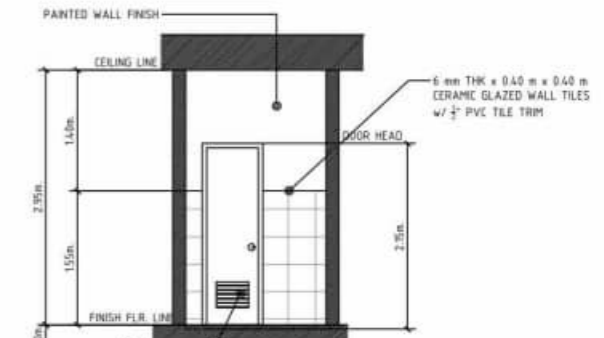
3 SCHEDULE OF DOORS AND WINDOWS  
SCALE: 1 : 100 M



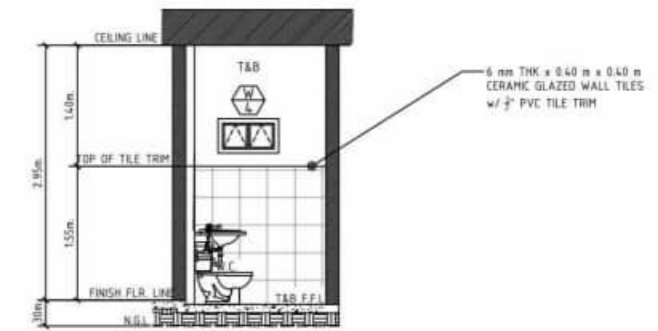
PLAN



ELEVATION @ 2



ELEVATION @ 1



ELEVATION @ 3

4 DETAIL OF TOILET AND BATH  
SCALE: 1 : 50 M



OWNER:  
**BUREAU OF FIRE PROTECTION  
REGION 9**



Project Title:  
**DESIGN & BUILD OF TIGBAO  
MUNICIPAL TYPICAL FIRE  
STATION WITH MEZZANINE &  
COVERED ROOF DECK**

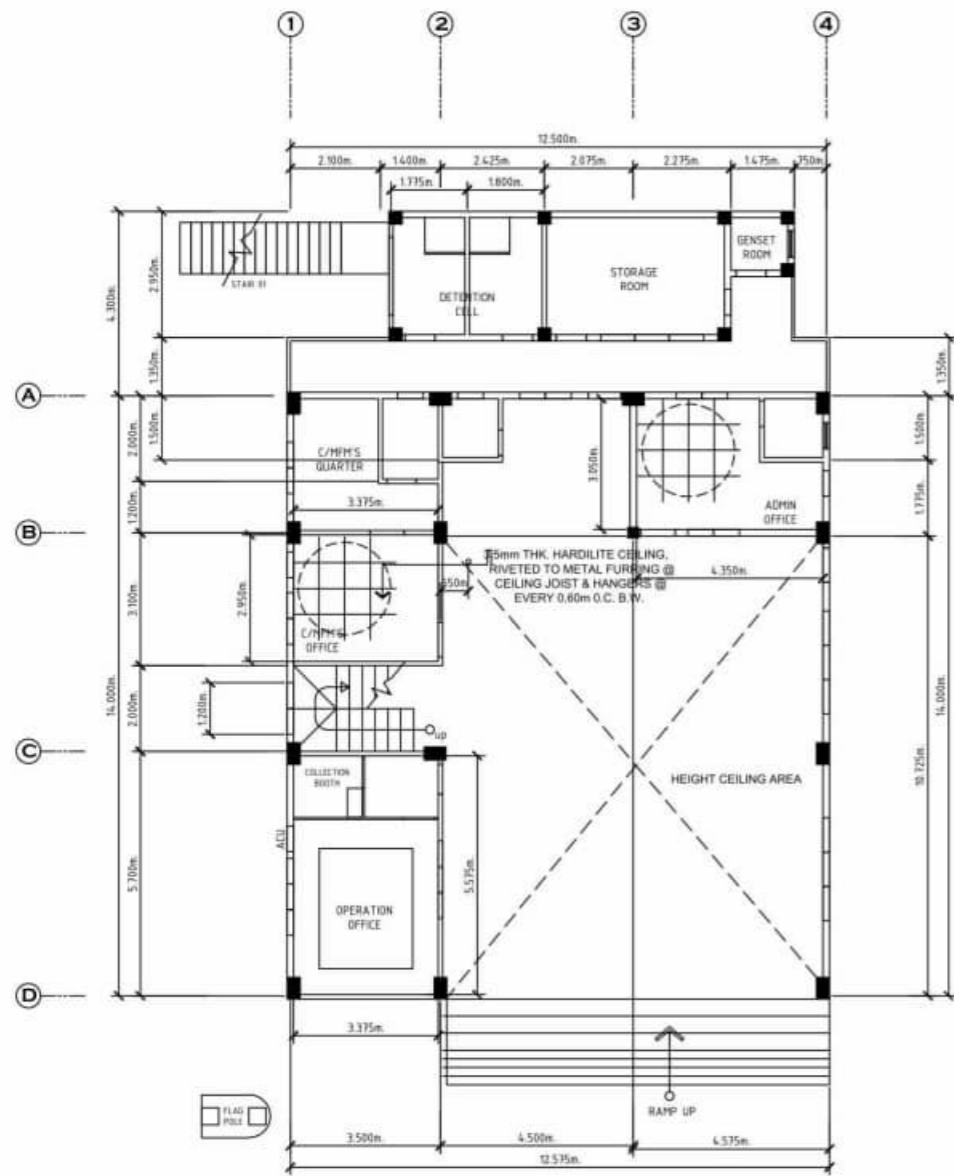
Submitted By:  
**FERNANDO Y. PAMERON**  
President / Gen. Manager

Checked By:  
**SUPT REGGY A OLMEDO**  
Chief, Logistics Division

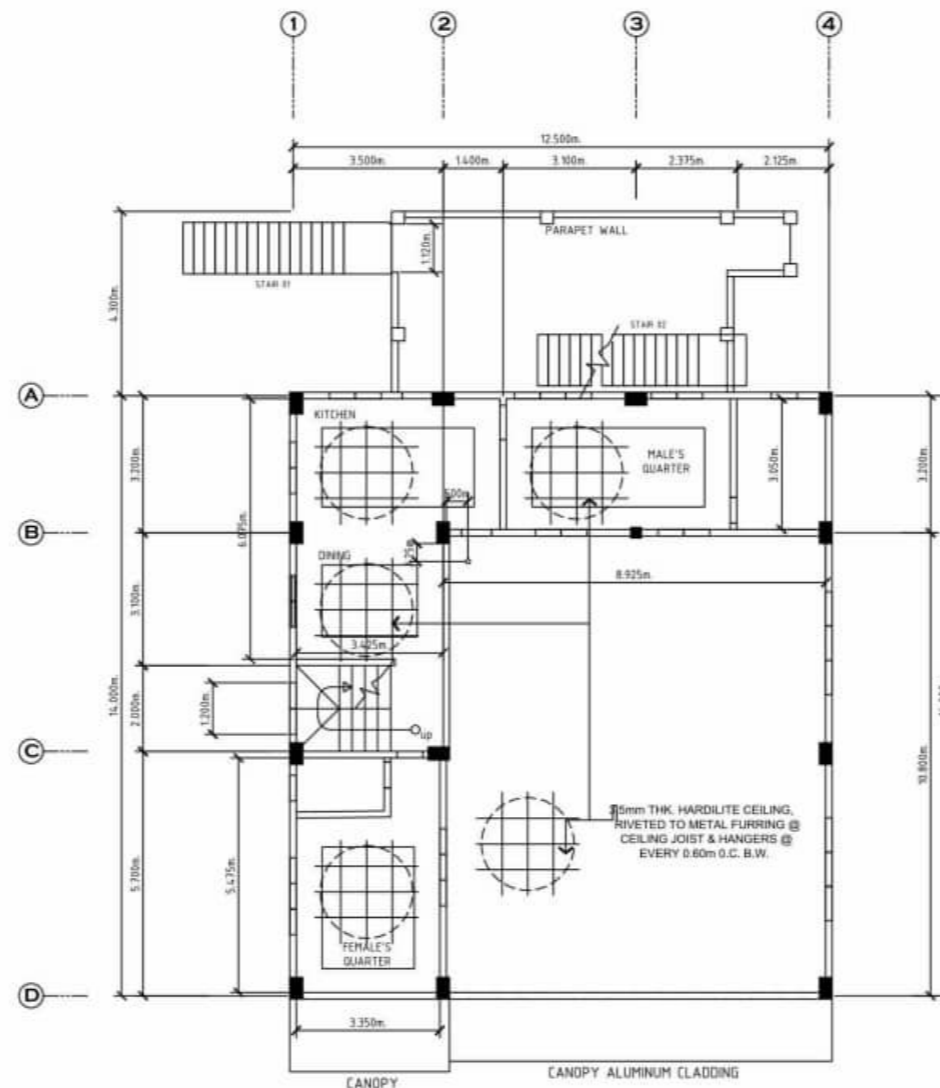
Approved By:  
**CSUPT RENATO BADONG MARCIAL, DSC**  
Regional Director

Sheet Contents:  
AS SHOWN

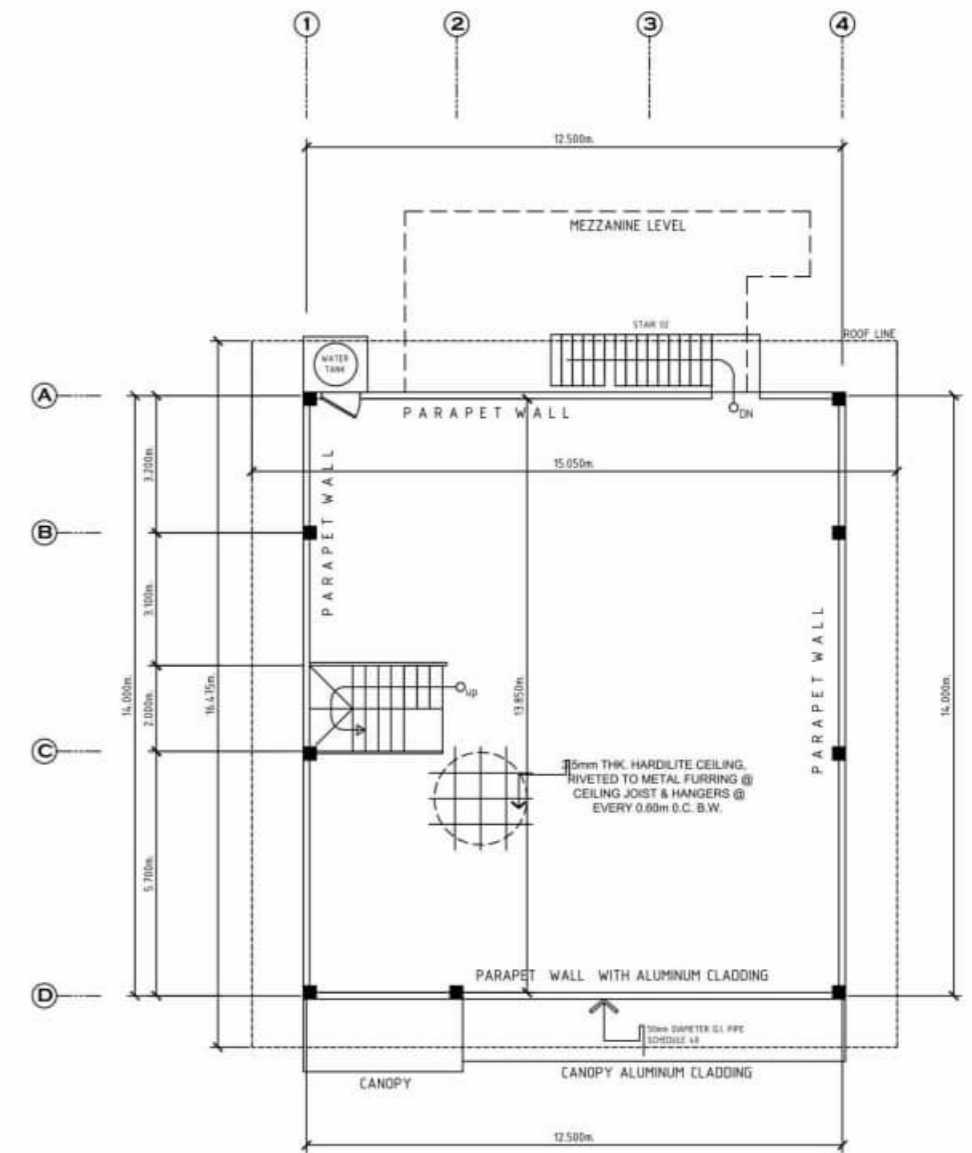
SHEET NO.  
**S-1**  
1-10



( GROUND FLOOR )  
**REFLECTED CEILING PLAN**  
 SCALE: 1 : 100 M



( SECOND FLOOR )  
**REFLECTED CEILING PLAN**  
 SCALE: 1 : 100 M



( ROOF DECK )  
**REFLECTED CEILING PLAN**  
 SCALE: 1 : 100 M



**BUREAU OF FIRE PROTECTION  
 REGION 9**



Project Title:  
**DESIGN & BUILD OF TIGBAO  
 MUNICIPAL TYPICAL FIRE  
 STATION WITH MEZZANINE &  
 COVERED ROOF DECK**

Submitted By:  
**FERNANDO Y. PAMERON**  
 President / Gen. Manager

Checked By:  
**SUPT REGGY A. OLMEDO**  
 Chief, Logistics Division

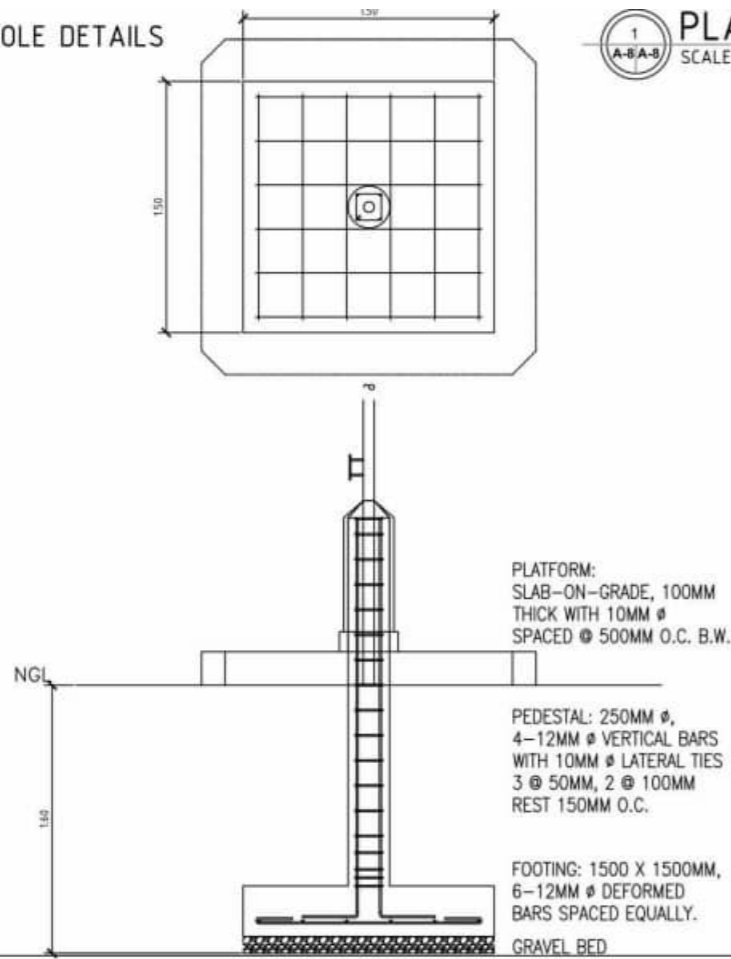
Approved By:  
**CSUPT RENATO BADONG MARCIAL, DSC**  
 Regional Director

Sheet Contents:  
 AS SHOWN

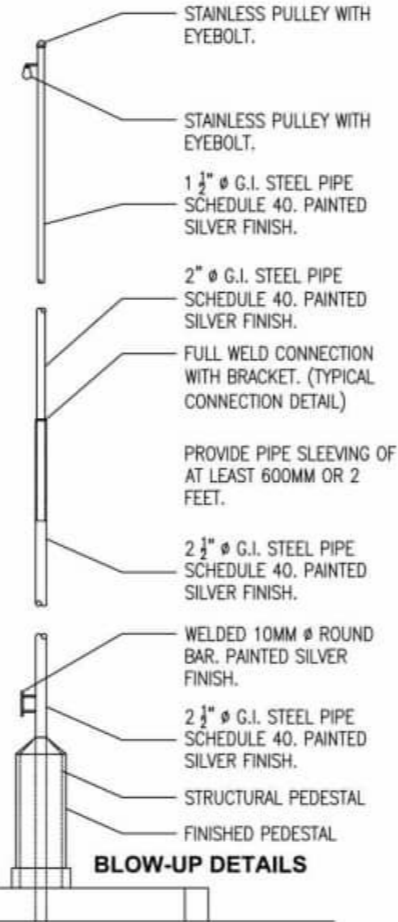
SHEET NO.  
**S-1**  
 1-10



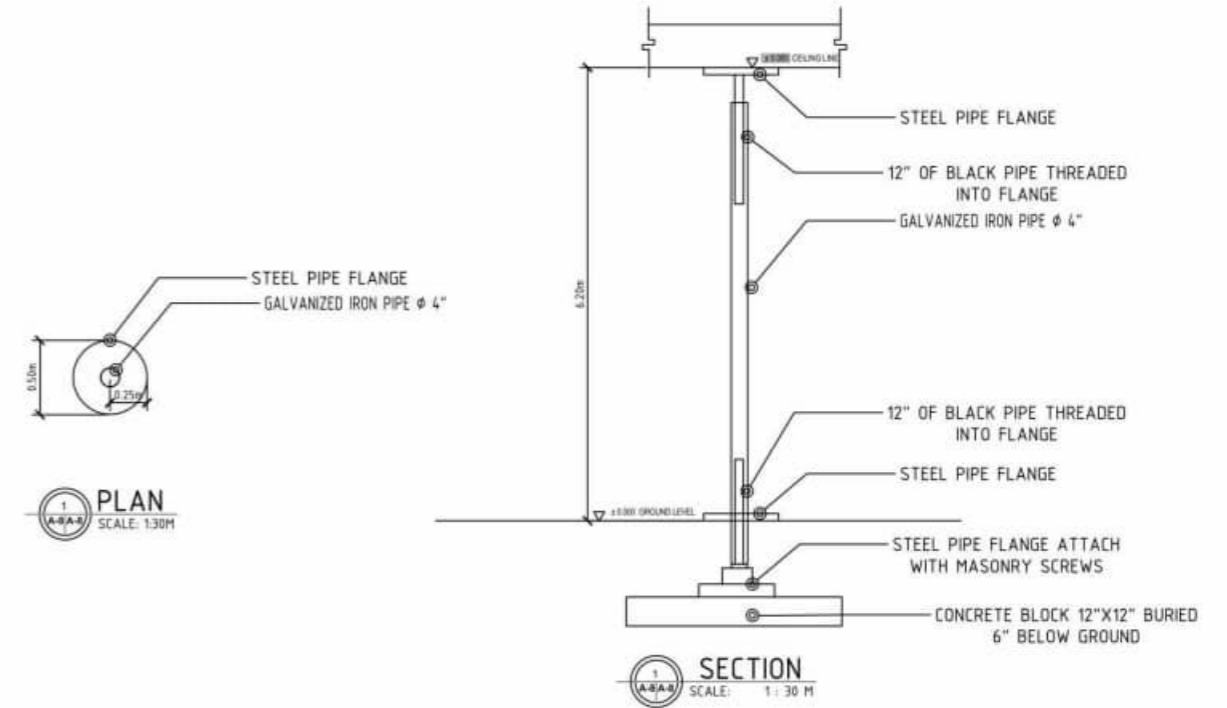
FLAG POLE DETAILS



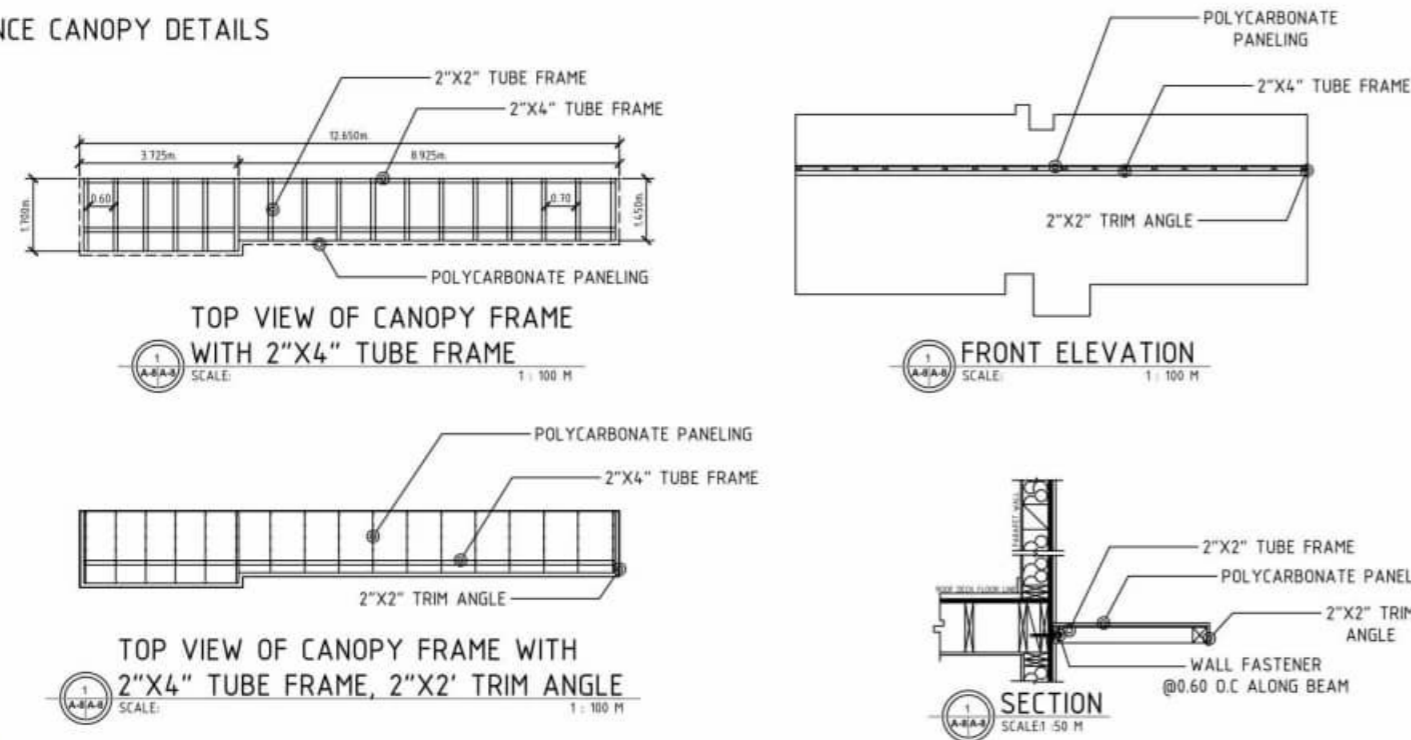
1 PLAN & DETAILS SCALE: NTS



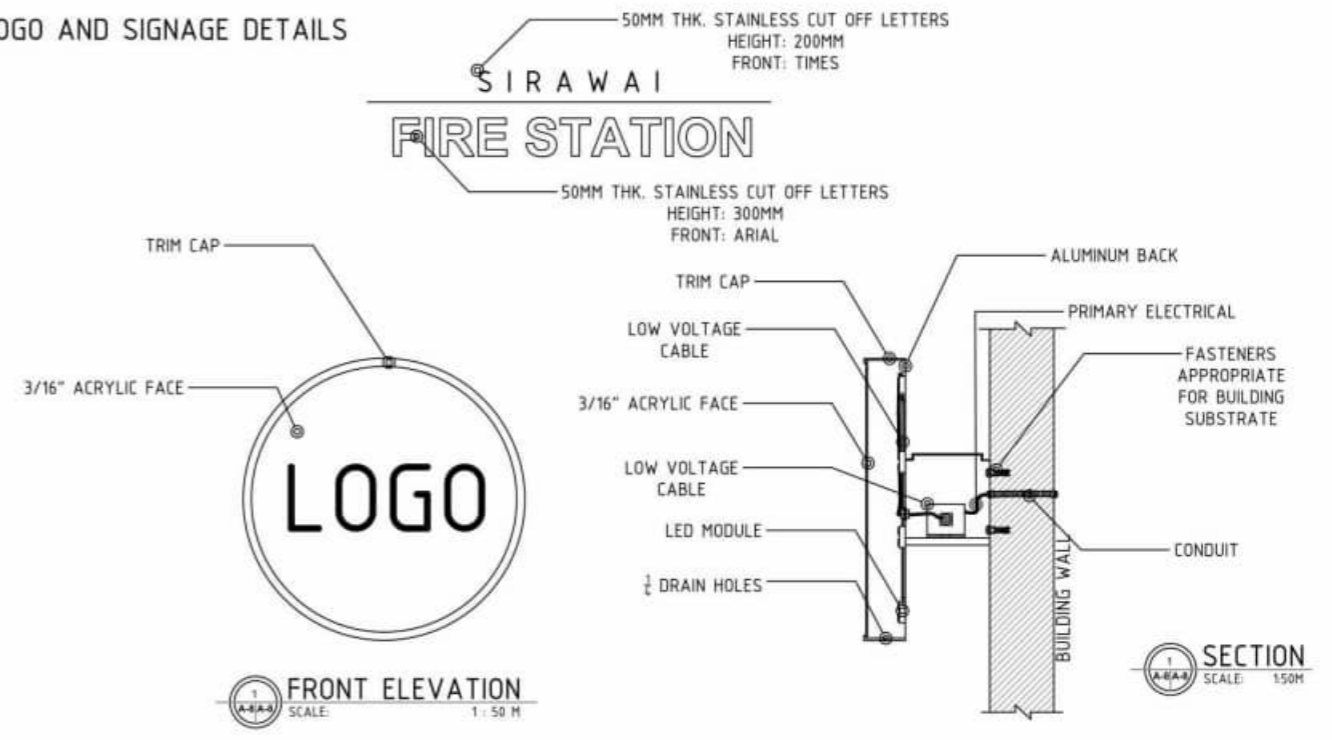
SLIDING POLE DETAILS



ENTRANCE CANOPY DETAILS



LOGO AND SIGNAGE DETAILS



OWNER:  
**BUREAU OF FIRE PROTECTION  
REGION 9**



Project Title:  
**DESIGN & BUILD OF TIGBAO  
MUNICIPAL TYPICAL FIRE  
STATION WITH MEZZANINE &  
COVERED ROOF DECK**

Submitted By:  
**FERNANDO Y. PAMERON**  
President / Gen. Manager

Checked By:  
**SUPT REGGY A OLMEDO**  
Chief, Logistics Division

Approved By:  
**CSUPT RENATO BADONG MARCIAL, DSC**  
Regional Director

Sheet Contents:  
AS SHOWN

SHEET NO.  
**S-1**  
1-10



OWNER:  
**BUREAU OF FIRE PROTECTION  
REGION 9**



Project Title:  
**DESIGN & BUILD OF TIGBAO  
MUNICIPAL TYPICAL FIRE  
STATION WITH MEZZANINE &  
COVERED ROOF DECK**

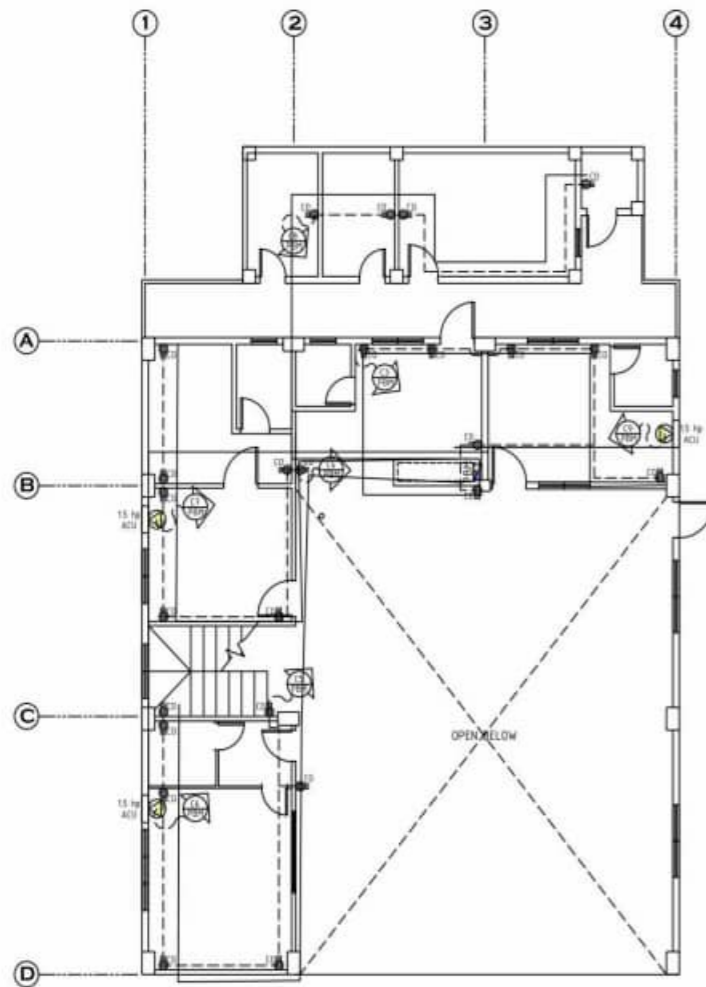
Submitted By:  
**FERNANDO Y. PAMERON**  
President / Gen. Manager

Checked By:  
**SUPT REGGY A OLMEDO**  
Chief, Logistics Division

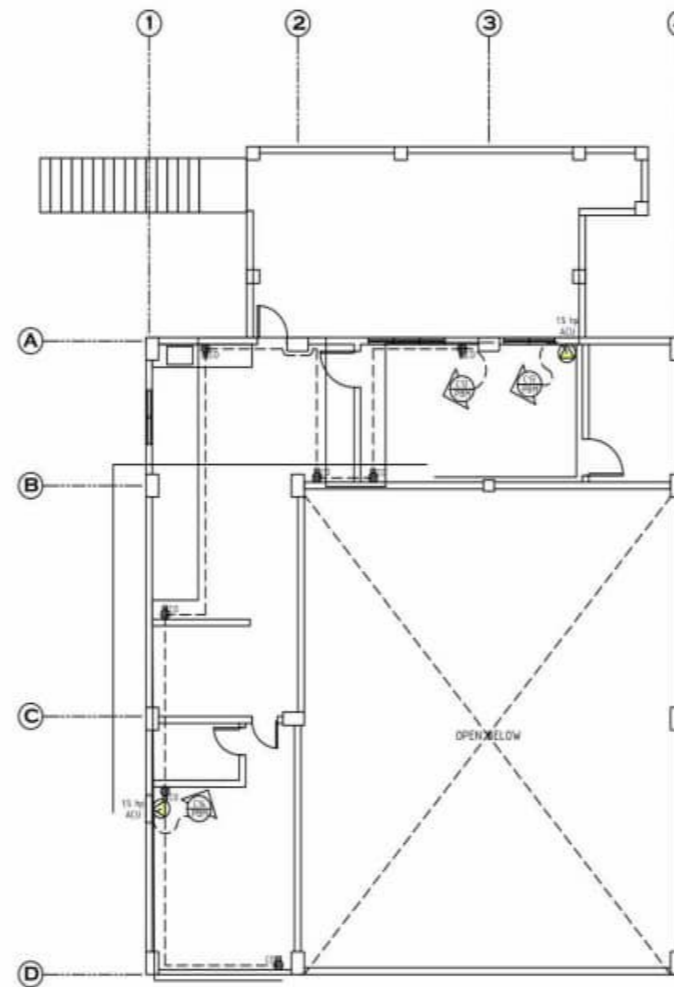
Approved By:  
**CSUPT RENATO BADONG MARCIAL, DSC**  
Regional Director

Sheet Contents:  
AS SHOWN

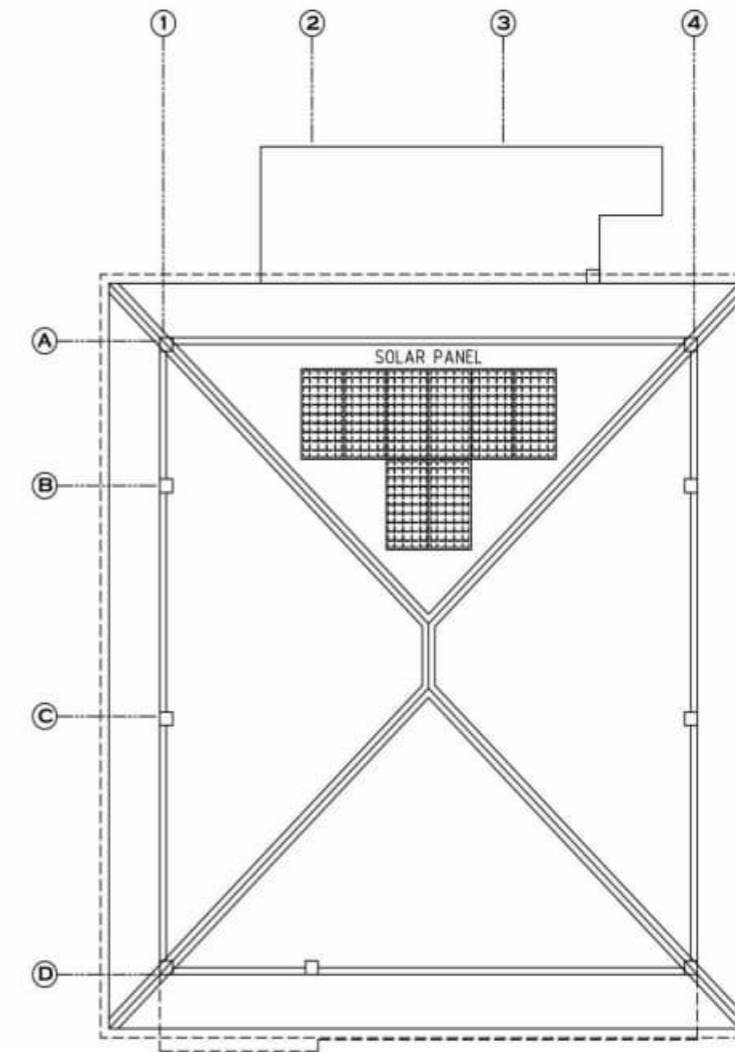
SHEET NO.  
**S-1**  
1-10



( G.F. LIGHTING LAYOUT )  
**ELECTRICAL LAYOUT PLAN**  
 SCALE: 1 : 100 M



( MEZZANINE: LIGHTING LAYOUT )  
**ELECTRICAL LAYOUT PLAN**  
 SCALE: 1 : 100 M



( ROOF DECK )  
**SOLAR PANEL LAYOUT PLAN**  
 SCALE: 1 : 100 M

LEGENDS	
	LED DOWN LIGHT
	LED CIRCULAR LIGHT
	1- GANG SWITCH
	2- GANG SWITCH
	3- GANG SWITCH
	THREE PRONG DUPLEX C.O.
	PANEL BOARD
	KW HOUR METER
	DISTRIBUTION TRANSFORMER
	CIRCUIT HOMERUN
	CIRCUIT BREAKER

**GENERAL NOTES:**

1. THE ELECTRICAL WORKS SHALL BE DONE IN ACCORDANCE WITH THE RULES AND REGULATIONS OF THE LATEST EDITION OF THE PHILIPPINE ELECTRICAL CODE, APPLICABLE ORDINANCES OF THE LOCAL GOVERNMENT AND WITH THE REQUIREMENTS OF THE LOCAL POWER COMPANY.
2. ALL WIRING SHALL BE INSTALLED IN STANDARD RIGID STEEL CONDUITS RUN EMBEDDED INSIDE THE CONCRETE AND HOLLOW BLOCK STRUCTURES, SLABS, COLUMNS, WALLS, PARTITIONS AND/OR RUN CONCEALED BETWEEN DOUBLE WALL WOODEN PARTITIONS AND INSIDE THE CEILING SPACES. WHERE THE USE OF CONCEALED CONDUIT WIRING IS IMPRACTICABLE SURFACE METAL MouldING WIRING MAY BE USED.
3. UNLESS OTHERWISE INDICATED IN THE PLAN, THE MINIMUM SIZES OF WIRE AND RIGID STEEL CONDUIT TO BE USED SHALL BE NO. 2.0 mm<sup>2</sup> AND 15mm DIAMETER, RESPECTIVELY.
4. ALL LIGHTING CIRCUIT HOME RUN AND CONVENIENCE OUTLETS SHALL BE WIRED WITH NOT LESS THAN 3.5mm<sup>2</sup> THHN IN SIZE UNLESS OTHERWISE INDICATED ON THE PLAN.
5. WHENEVER REQUIRED AND NECESSARY PULL BOXES OR JUNCTION BOXES OF PROPER SIZES SHALL BE INSTALLED AT CONVENIENT AND INCONSPICUOUS LOCATIONS, ALTHOUGH SUCH BOXES ARE NOT SHOWN ON THE PLANS NOR MENTIONED IN THE SPECIFICATIONS.

6. ALL SERVICE ENTRANCE EQUIPMENT SUCH AS PANEL BOARD, CIRCUIT BREAKERS, ETC... SHALL BE PROPERLY GROUNDED IN ACCORDANCE WITH THE REQUIREMENTS OF THE PHILIPPINE ELECTRICAL CODE.
7. THE POWER SOURCE SHALL BE SINGLE PHASE, 2 WIRE, 220 VOLTS, 60 HZ A.C.
8. ALL WALL OUTLETS SHALL BE INSTALLED AT FOLLOWING HEIGHT ABOVE THE FINISHED FLOOR LEVEL UNLESS OTHERWISE NOTED :

- OTHERWISE NOTED :
- a. WALL SWITCHES ( S1, S2, S3 ) . . . . . 1200 mm
  - b. CONVENIENCE OUTLET . . . . . 300 mm
  - c. AIR-CONDITIONING UNIT . . . . . AT

- CONVENIENT HEIGHT NEAR THE EQUIPMENT
9. ALL MATERIALS TO BE USED SHALL BE BRAND NEW AND OF THE APPROVED TYPE FOR THE LOCATION AND PURPOSE.
  10. ALL ELECTRICAL WORKS SHALL BE DONE UNDER THE DIRECT AND IMMEDIATE SUPERVISION OF A DULY LICENSED ELECTRICAL ENGINEER.

	OWNER:		Project Title:	Submitted By:	Checked By:	Approved By:	Sheet Contents:	SHEET NO.
	<b>BUREAU OF FIRE PROTECTION          REGION 9</b>		<b>DESIGN &amp; BUILD OF TIGBAO          MUNICIPAL TYPICAL FIRE          STATION WITH MEZZANINE &amp;          COVERED ROOF DECK</b>	<b>FERNANDO Y. PAMERON</b> President / Gen. Manager	<b>SUPT REGGY A OLMEDO</b> Chief, Logistics Division	<b>CSUPT RENATO BADONG MARCIAL, DSC</b> Regional Director	AS SHOWN	

**LOAD SCHEDULE: PBM ( GROUND FLOOR )**

NO. CIRCUIT	LOAD DESCRIPTION	LO	CO	SWITCH			W	VOLT	AMP	CIRCUIT BREAKER RATING					CONDUCTOR		GROUND		CONDUIT	
				S1	S2	S3				CB	AF	KAIC	P	TYPE	2 - SIZE	TYPE	1 - SIZE	TYPE	SIZE	TYPE
C-1	22 - 10w LED PN LIGHT (20w)	22		10	5		440	230	1.91	15	50	10	2	PLUS-IN	2 - 3.5 mm <sup>2</sup>	THW			20 mm <sup>2</sup>	PVC
C-2	22 - 10w LED PN LIGHT (20w)	22		2	6		440	230	1.91	15	50	10	2	PLUS-IN	2 - 3.5 mm <sup>2</sup>	THW			20 mm <sup>2</sup>	PVC
C-3	1 (100w) DUPLEX CONVENIENCE OUTLET	7					1,240	230	5.48	20	50	10	2	PLUS-IN	2 - 3.5 mm <sup>2</sup>	THW	1 - 3.5 mm <sup>2</sup>	TW	20 mm <sup>2</sup>	PVC
C-4	1 (100w) DUPLEX CONVENIENCE OUTLET	7					1,240	230	5.48	20	50	10	2	PLUS-IN	2 - 3.5 mm <sup>2</sup>	THW	1 - 3.5 mm <sup>2</sup>	TW	20 mm <sup>2</sup>	PVC
C-5	1 (100w) DUPLEX CONVENIENCE OUTLET	7					1,240	230	5.48	20	50	10	2	PLUS-IN	2 - 3.5 mm <sup>2</sup>	THW	1 - 3.5 mm <sup>2</sup>	TW	20 mm <sup>2</sup>	PVC
C-6	1 (15 HPI) ACU	1					1,100	230	10	30	50	10	2	PLUS-IN	2 - 5.5 mm <sup>2</sup>	THW	1 - 3.5 mm <sup>2</sup>	TW	20 mm <sup>2</sup>	PVC
C-7	1 (15 HPI) ACU	1					1,100	230	10	30	50	10	2	PLUS-IN	2 - 5.5 mm <sup>2</sup>	THW	1 - 3.5 mm <sup>2</sup>	TW	20 mm <sup>2</sup>	PVC
C-8	4 (100w) DUPLEX CONVENIENCE OUTLET	4					720	230	3.13	20	50	10	2	PLUS-IN	2 - 3.5 mm <sup>2</sup>	THW	1 - 3.5 mm <sup>2</sup>	TW	20 mm <sup>2</sup>	PVC
C-9	1 (15 HPI) ACU	1					1,100	230	10	30	50	10	2	PLUS-IN	2 - 5.5 mm <sup>2</sup>	THW	1 - 3.5 mm <sup>2</sup>	TW	20 mm <sup>2</sup>	PVC
C-10	8 - 10w PENDANT LIGHT 4 - 10w LED PN LIGHT (20w)	12		2			800	230	1.83	15	50	10	2	PLUS-IN	2 - 3.5 mm <sup>2</sup>	THW			20 mm <sup>2</sup>	PVC
C-11	22 - 10w LED PN LIGHT (20w)	22		1	1		440	230	1.91	15	50	10	2	PLUS-IN	2 - 3.5 mm <sup>2</sup>	THW			20 mm <sup>2</sup>	PVC
C-12	1 (100w) DUPLEX CONVENIENCE OUTLET	7					1,240	230	5.48	20	50	10	2	PLUS-IN	2 - 3.5 mm <sup>2</sup>	THW	1 - 3.5 mm <sup>2</sup>	TW	20 mm <sup>2</sup>	PVC
C-13	1 (15 HPI) ACU	1					1,100	230	10	30	50	10	2	PLUS-IN	2 - 5.5 mm <sup>2</sup>	THW	1 - 3.5 mm <sup>2</sup>	TW	20 mm <sup>2</sup>	PVC
C-14	1 (15 HPI) ACU	1					1,100	230	10	30	50	10	2	PLUS-IN	2 - 5.5 mm <sup>2</sup>	THW	1 - 3.5 mm <sup>2</sup>	TW	20 mm <sup>2</sup>	PVC
PBM	TOTAL ( PBM )	38	37	12	12	3	13,440	230	84.16	100	100	10	2	PLUS-IN	2 - 30 mm <sup>2</sup>	THW	1 - 8.0 mm <sup>2</sup>	TW	40 mm <sup>2</sup>	RSC

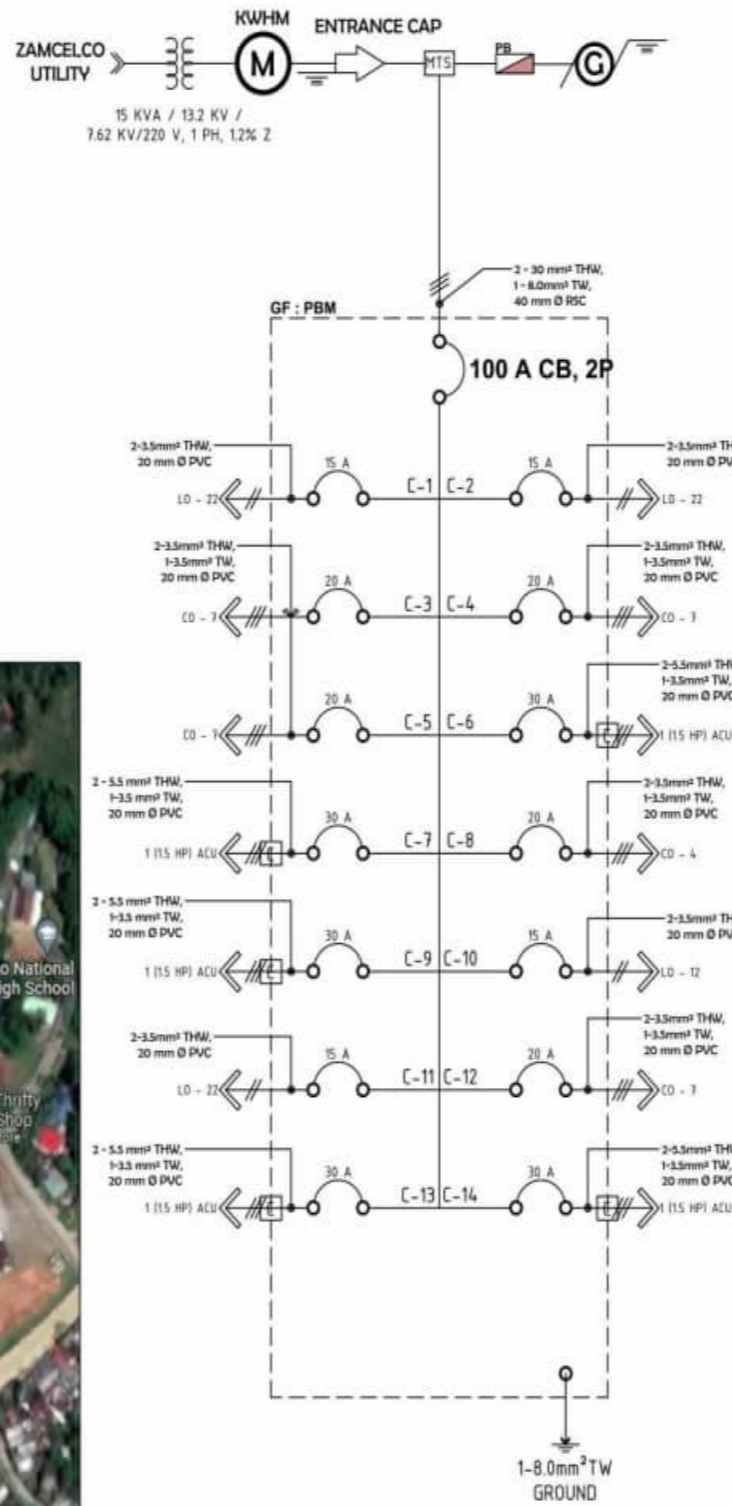
**COMPUTATION: PBM**  
 TOTAL VA = 13,440W / 80% PF = 16,825 VA X 80% DF = 13,460 VA  
 WIRE = [ 84.16 x 80%DF ] + [ 25% x 10 ] = 69,828 A / 110 A,  
 USE: 2 - 30mm<sup>2</sup> THW, 1-8.0mm<sup>2</sup> TW, 40mm Ø RSC  
 ICB = [ 67.328 - 10 ] + [ 250% x 10 ] = 82.328 A, USE: 100 A CB, 2P

**TRANSFORMER REQUIREMENTS:**  
 KVA = 13,440 / 1000 = 13.44 W  
 KVA = 13,440 / 80% PF = 16,825 x 80% DF = 13,460 VA  
 = 13,460 / 1000 = 13.46 KVA,  
 USE: 15 KVA/7.62 KV/230 V, 1 PH

**GENSET REQUIREMENTS:**  
 KVA = 13,440 / 1000 = 13.44 W  
 KVA = 13,440 / 80% PF = 16,825 x 120% SF = 20,190 VA  
 = 13,460 / 1000 = 13.46 KVA,  
 USE: 15 KVA GENSET, 6HZ, 1 Ø, 230 V, SLEDGE MOUNTED



LOCATION PLAN



SINGLE LINE WIRING DIAGRAM

**SHORT CIRCUIT ANALYSIS : GROUND FLOOR [PBM]**

Available Utility Infinite Assumption

15 KVA Transformer, 1 PH.

230 V, 1.2% Z

" C " = 4774

Fault X1 : PBM

50 Ft. 2 - 30mm<sup>2</sup> THW

Single Phase, 1 PHASE

100 A CB

If.l. = 1,000 x 15 ÷ 230 = **65.22 A**

Multiplier = 100 ÷ 1.2 = **83.33**

Is.c. = 65.22 x 83.33 = **5,434.78 A**

f = (2 x 50' x 5,434.78) ÷ (4774 x 230) = **0.49496**

M = 1 ÷ (1 + 0.49496) = **0.66891**

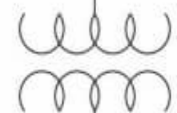
Is.c. sym RMS = 5,434.78 x 0.66891 = **3,635.38 A RMS**

Circuit Breaker rated not less than **10 KAIC Sym.**

Available Utility Infinite Assumption



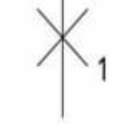
1 - 15 KVA  
 13.2 KV / 7.62 KV  
 230 V, 1 PH, 1.2%Z



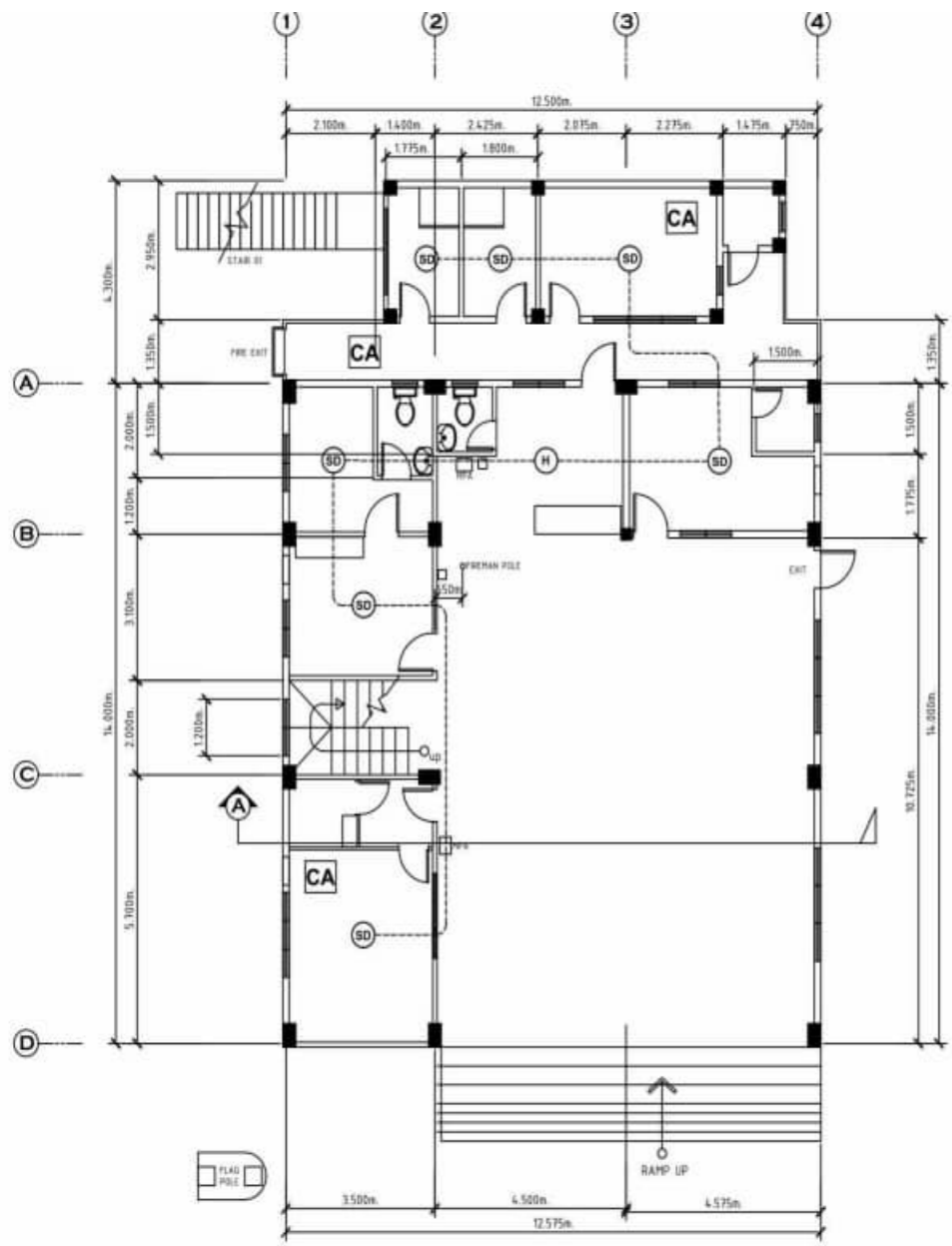
50'  
 2-30 mm<sup>2</sup> THW



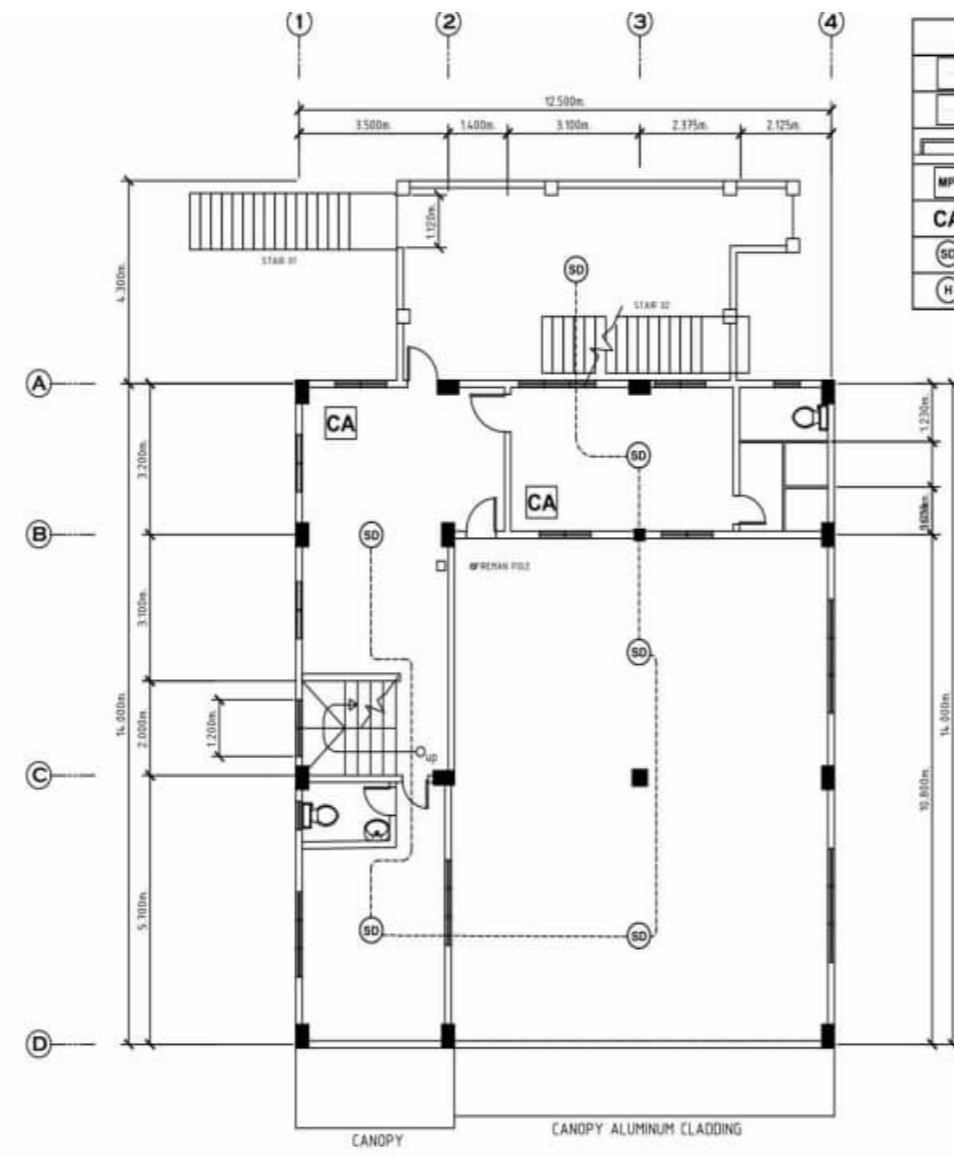
100 A CB, 2P



PBM

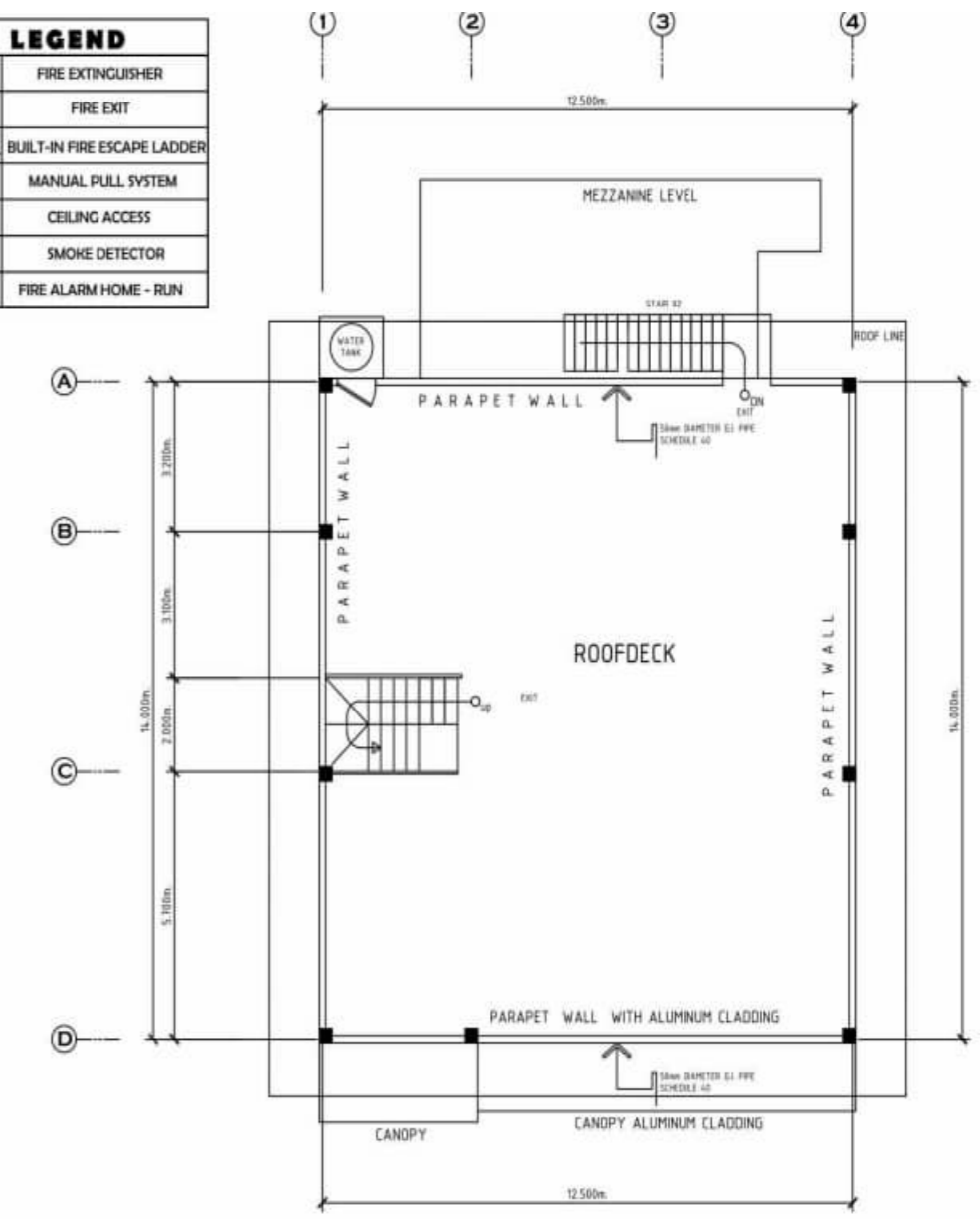


1 GROUND FLOOR FIRE PROTECTION PLAN  
SCALE: 1:100 M

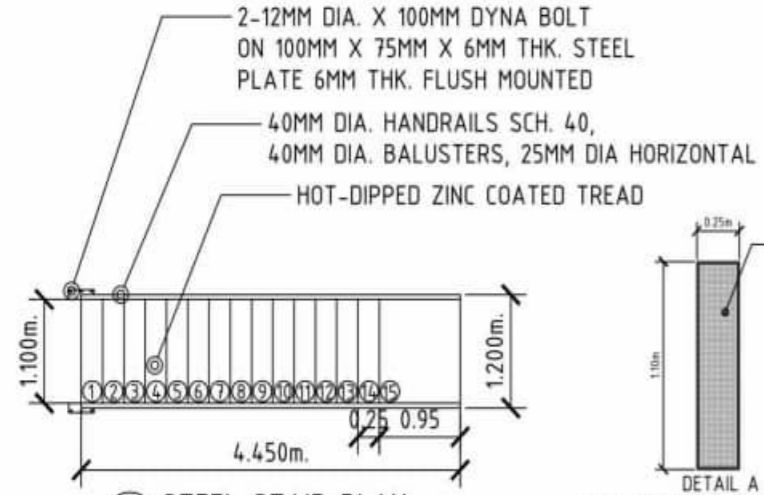


2 MEZZANINE FIRE PROTECTION FLOOR PLAN  
SCALE: 1:100 M

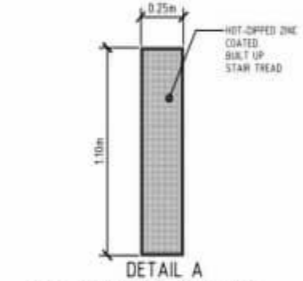
LEGEND	
[Symbol]	FIRE EXTINGUISHER
[Symbol]	FIRE EXIT
[Symbol]	BUILT-IN FIRE ESCAPE LADDER
[Symbol]	MANUAL PULL SYSTEM
[Symbol]	CEILING ACCESS
[Symbol]	SMOKE DETECTOR
[Symbol]	FIRE ALARM HOME - RUN



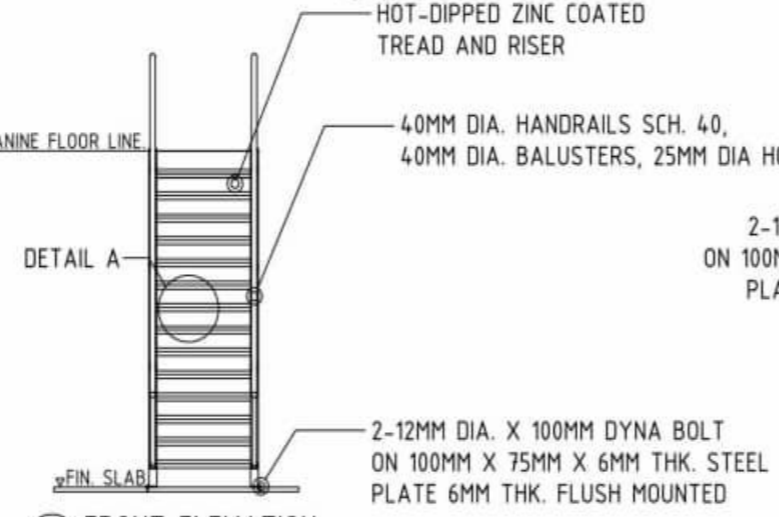
3 ROOFDECK PLAN  
SCALE: 1:100 M



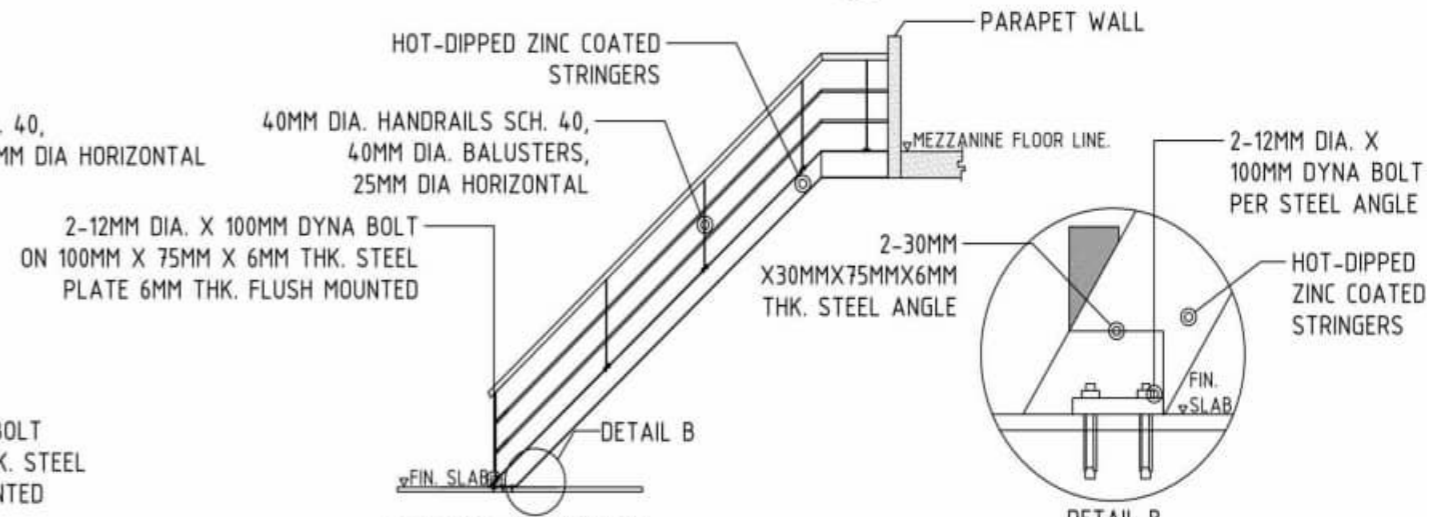
2 STEEL STAIR PLAN  
SCALE: 1:50 M



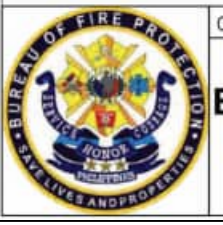
2 TREAD DETAIL  
SCALE: 1:25 M



2 FRONT ELEVATION  
SCALE: 1:50 M



2 SIDE ELEVATION  
SCALE: 1:50 M



OWNER:  
**BUREAU OF FIRE PROTECTION  
REGION 9**



Project Title:  
**DESIGN & BUILD OF TIGBAO  
MUNICIPAL TYPICAL FIRE  
STATION WITH MEZZANINE &  
COVERED ROOF DECK**

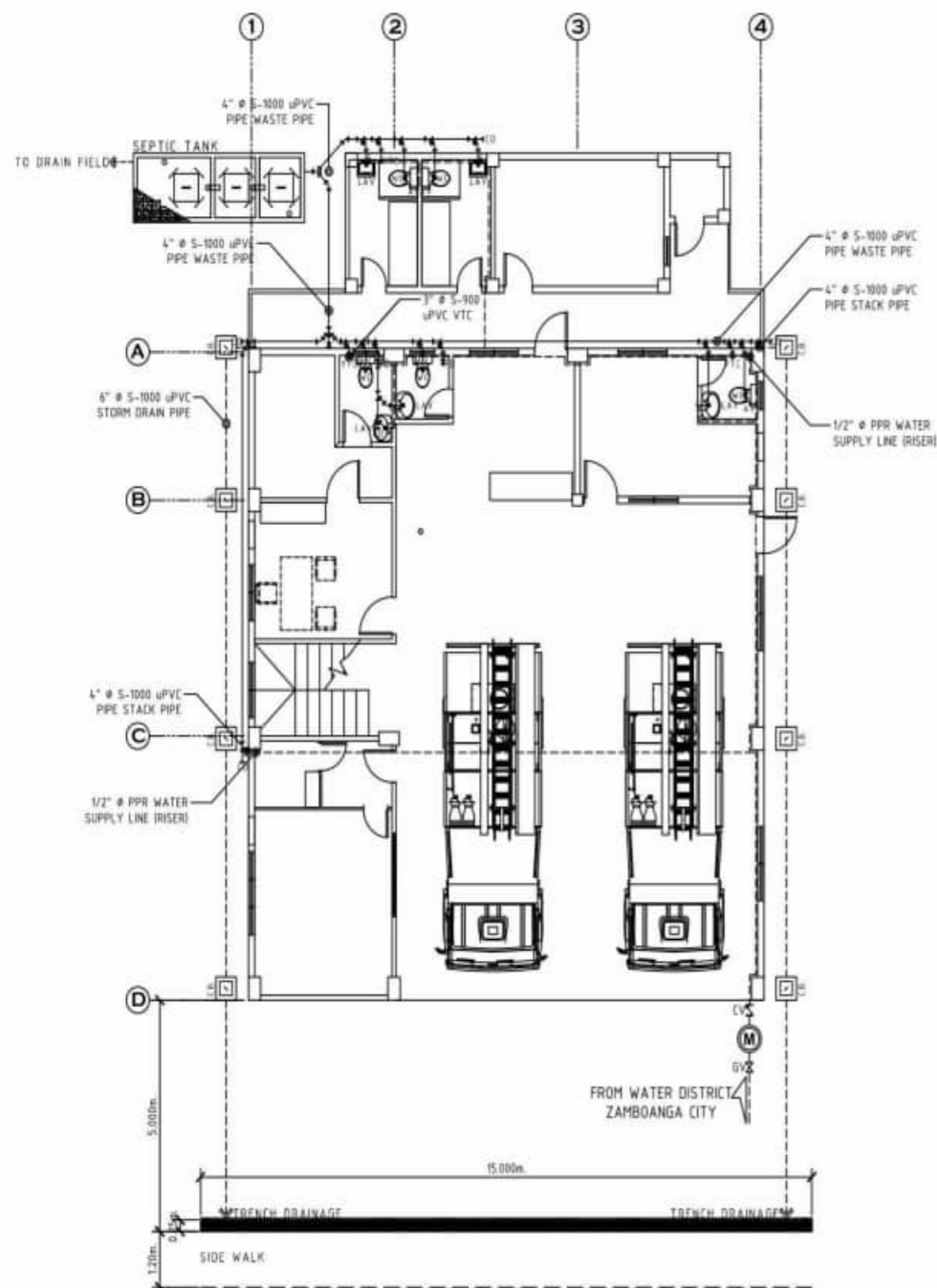
Submitted By:  
**FERNANDO Y. PAMERON**  
President / Gen. Manager

Checked By:  
**SUPT REGGY A OLMEDO**  
Chief, Logistics Division

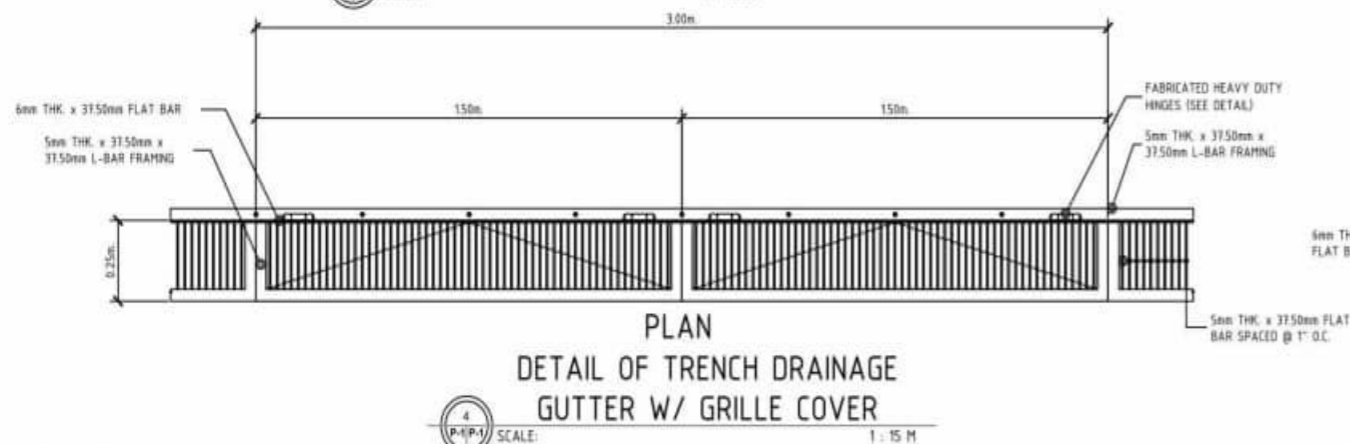
Approved By:  
**CSUPT RENATO BADONG MARCIAL, DSC**  
Regional Director

Sheet Contents:  
AS SHOWN

SHEET NO.  
**S-1**  
1-10

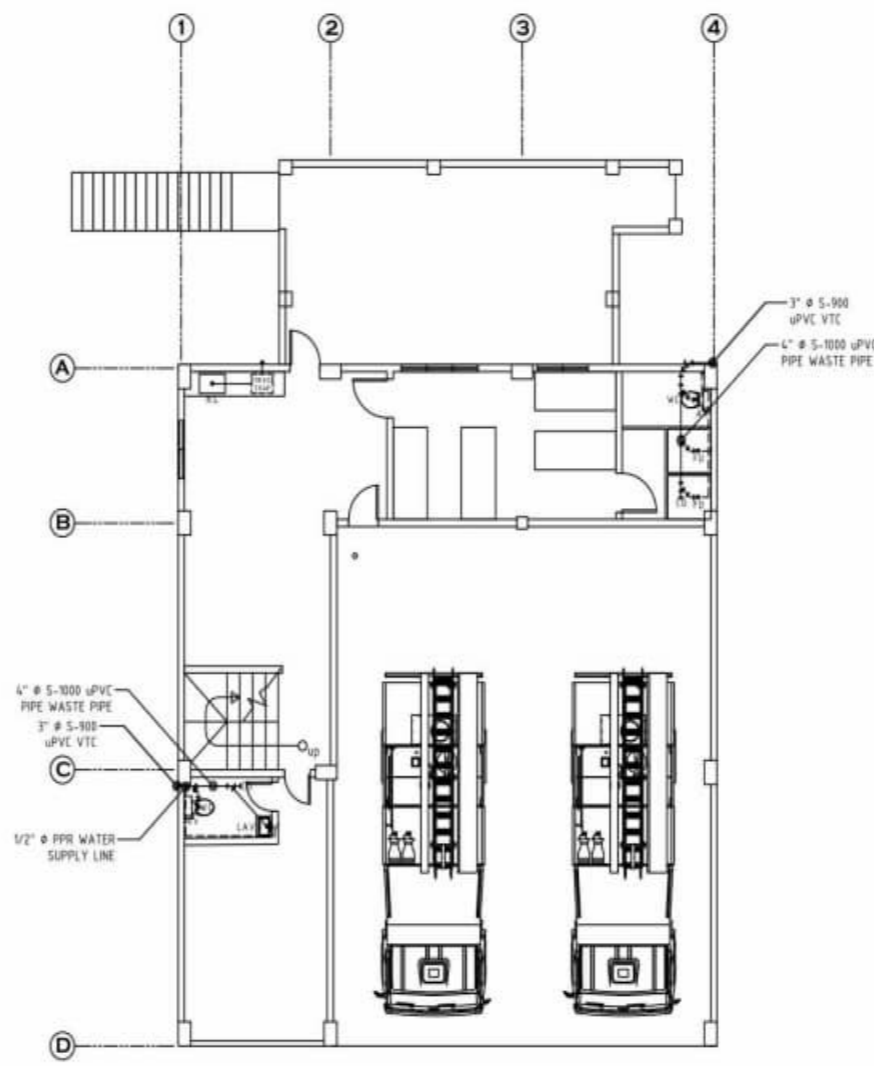


( DRAIN, WASTE, VENT. & WATER PIPE LINE )  
**G.F. PLUMBING LAYOUT PLAN**  
 SCALE: 1 : 100 M



**PLAN**  
 DETAIL OF TRENCH DRAINAGE  
 GUTTER W/ GRILLE COVER

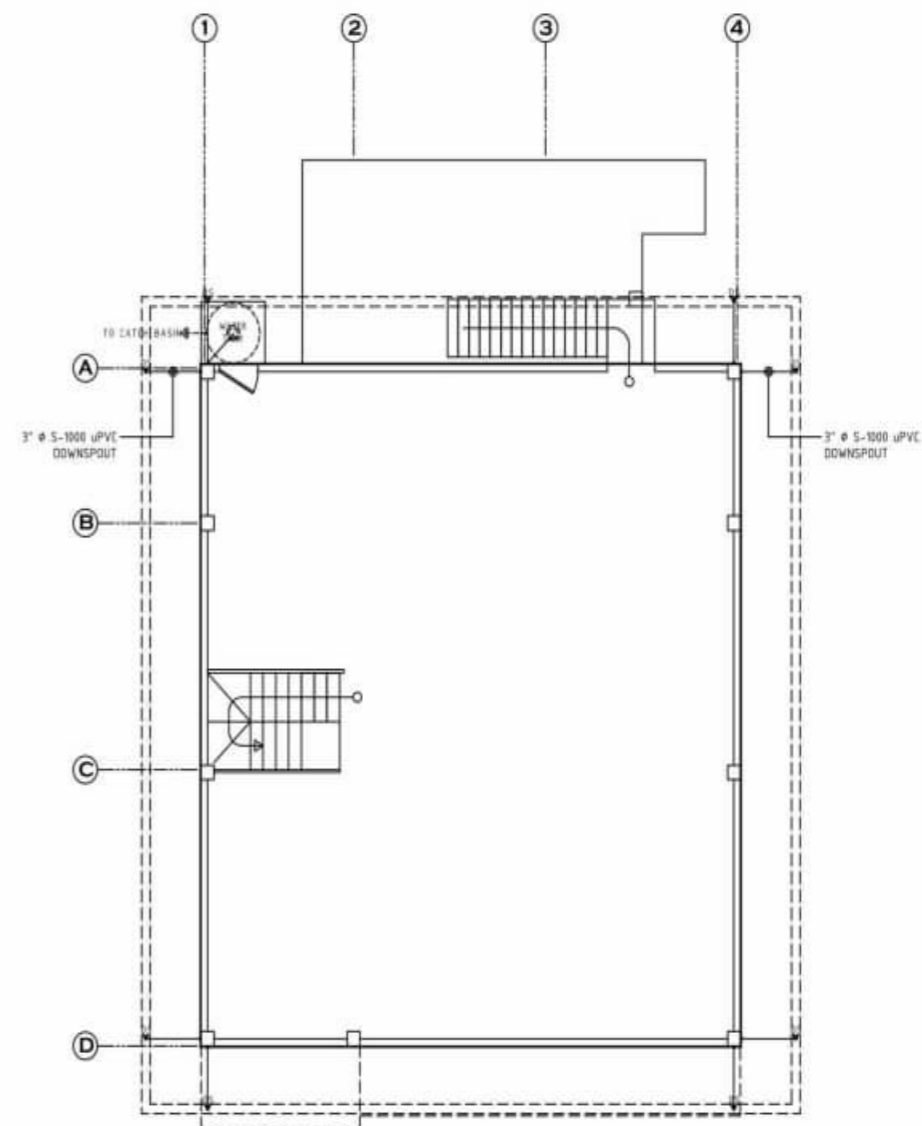
SCALE: 1 : 15 M



MEZZANINE:  
 (DRAIN, WASTE, VENT. & WATER)

**PLUMBING LAYOUT PLAN**

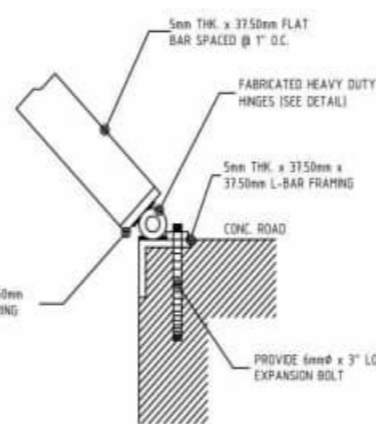
SCALE: 1 : 100 M



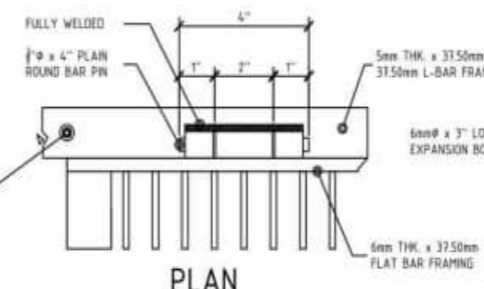
( ROOF DECK: DOWNSPOUT LAYOUT )

**PLUMBING LAYOUT PLAN**

SCALE: 1 : 100 M



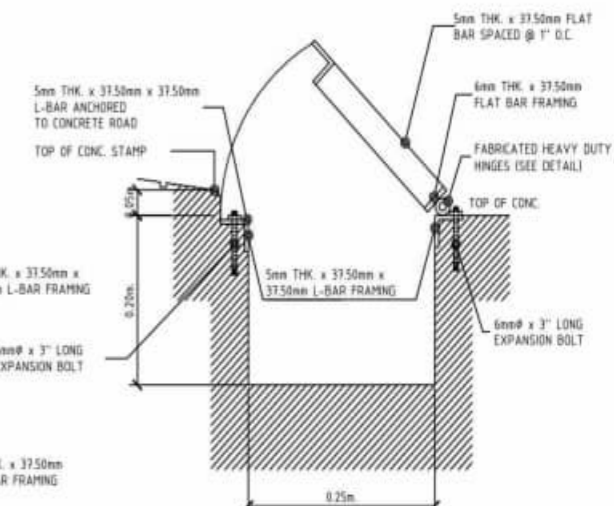
**SECTION**



**PLAN**

**DETAIL OF FABRICATED HEAVY DUTY HINGES**

SCALE: N.T.S.



**SECTION**

SCALE: N.T.S.



OWNER:  
**BUREAU OF FIRE PROTECTION  
 REGION 9**



Project Title:  
**DESIGN & BUILD OF TIGBAO  
 MUNICIPAL TYPICAL FIRE  
 STATION WITH MEZZANINE &  
 COVERED ROOF DECK**

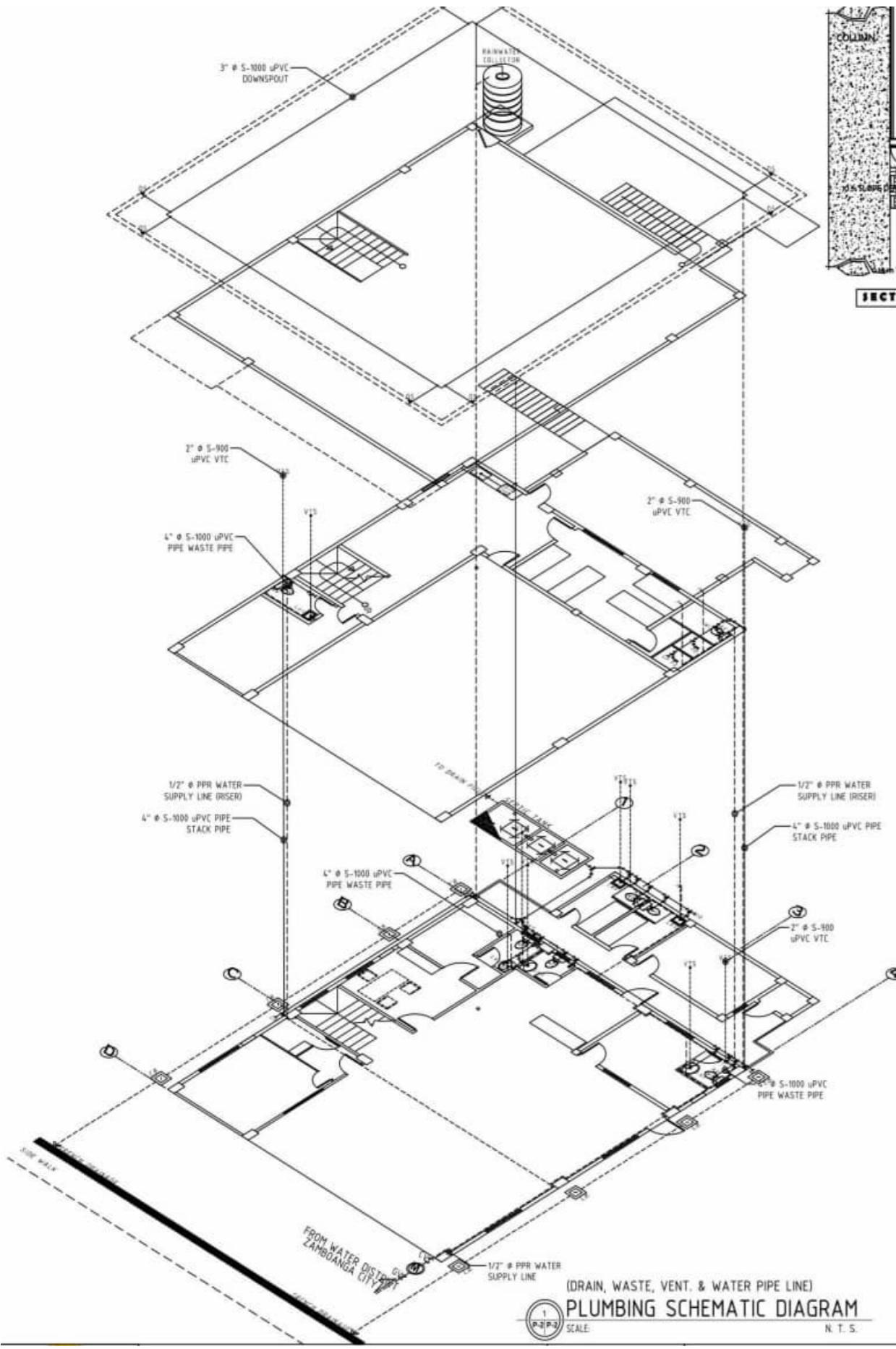
Submitted By:  
**FERNANDO Y. PAMERON**  
 President / Gen. Manager

Checked By:  
**SUPT REGGY A OLMEDO**  
 Chief, Logistics Division

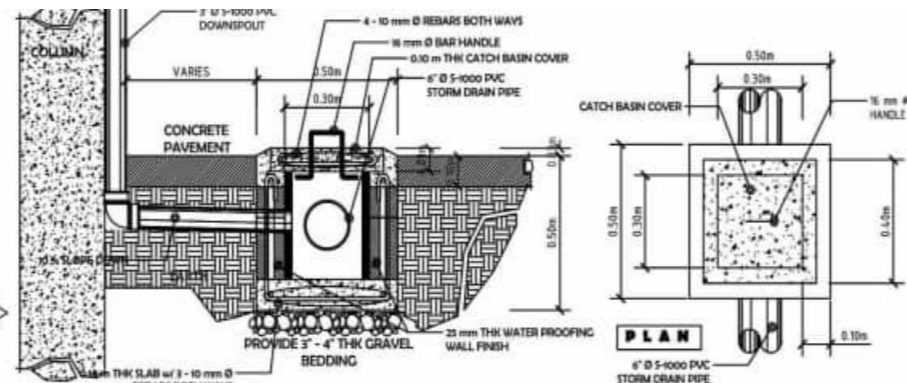
Approved By:  
**CSUPT RENATO BADONG MARCIAL, DSC**  
 Regional Director

Sheet Contents:  
 AS SHOWN

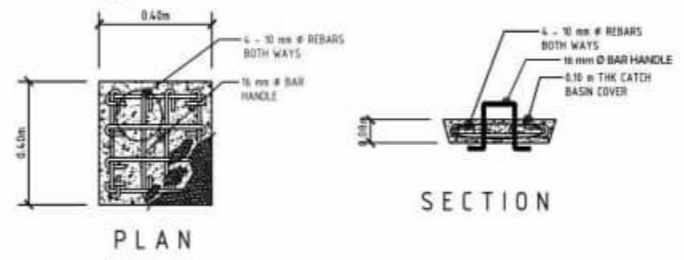
SHEET NO.  
**S-1**  
 1-10



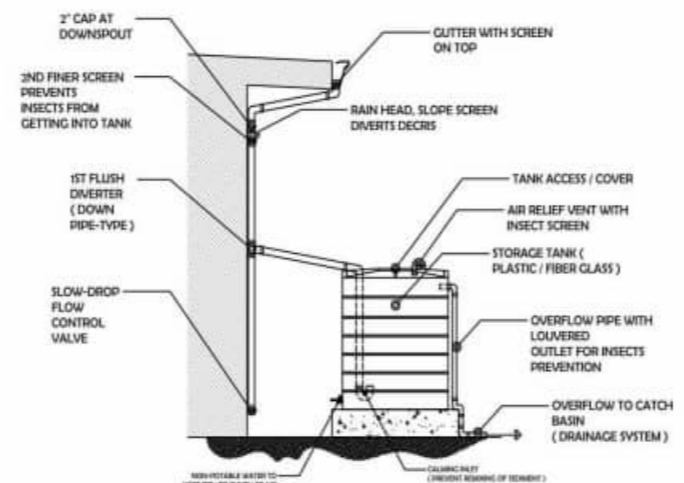
1  
P.P.P-2  
SCALE: 1:30  
N.T.S.  
(DRAIN, WASTE, VENT. & WATER PIPE LINE)  
**PLUMBING SCHEMATIC DIAGRAM**



2  
P.P.P-2  
SCALE: 1:15  
**DETAIL OF CATCH BASIN**



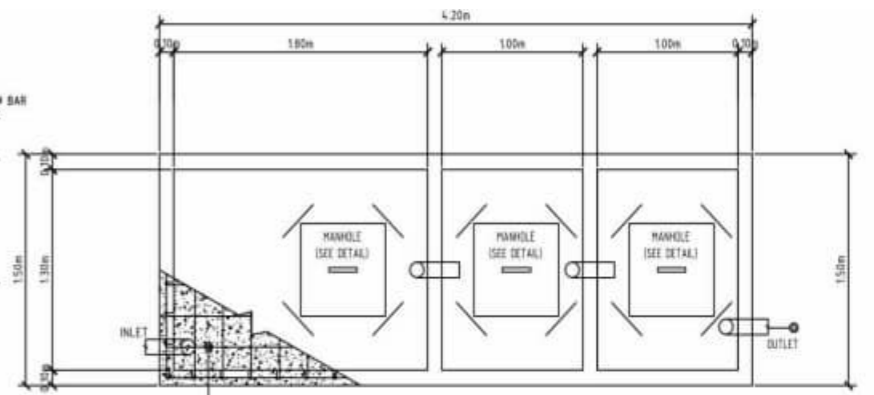
3  
P.P.P-2  
SCALE: 1:15  
**DETAIL OF MAN HOLE COVER**



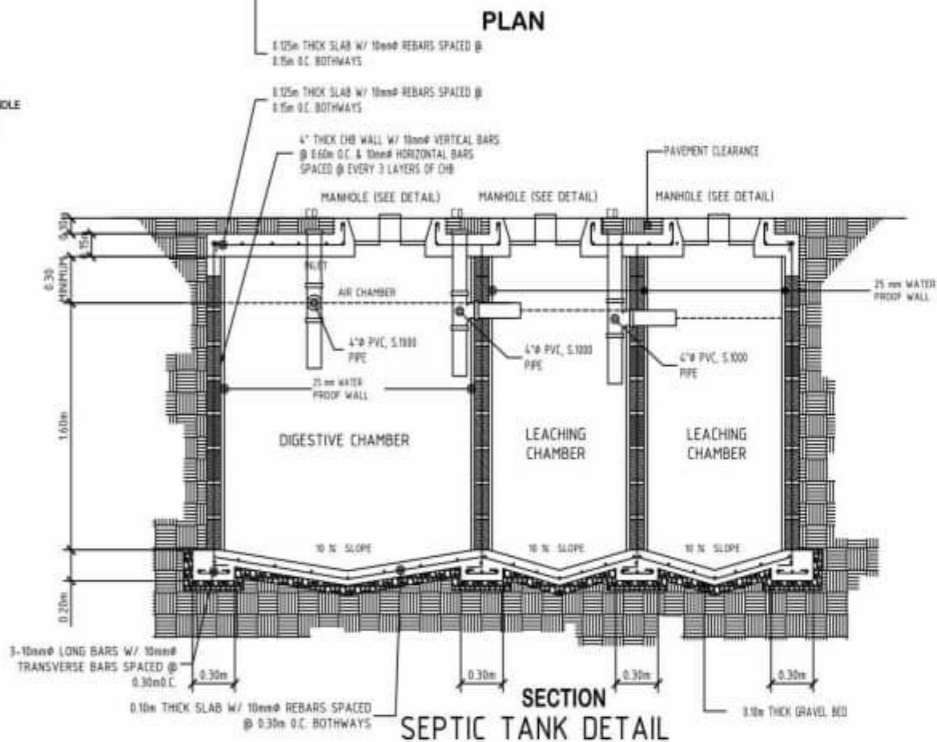
4  
P.P.P-2  
SCALE: N.T.S.  
**TYPICAL DETAIL OF RAINWATER COLLECTOR**

LEGEND	
F	FAUCET
AV	ANGLE VALVE SUPPLY FIXTURE
CV	GATE VALVE
CV	CHECK VALVE
M	WATER METER
VTC	VENT THRU CEILING
LAV.	LAVATORY
WC	WATER CLOSET
FD	FLOOR DRAIN
C.O.	CLEAN OUT
KS	KITCHEN SINK

- GENERAL NOTES:**
1. RUN ALL HORIZONTAL PIPINGS IN PERFECT ALIGNMENT AT ANY FORM GRADE OF NOT LESS THAN TWO PERCENT (2%).
  2. ALL CHANGES IN DIRECTION SHALL BE MADE BY APPROPRIATE USE OF FORTY-FIVE DEGREES (45) WYES, TEES AND CROSSES MAYBE USED IN VENTILATION PIPES.
  3. NO DOUBLE HUB OR DOUBLE TEE BRANCH SHALL BE USED ON HORIZONTAL SOIL OR WASTE LINES, THE DRILLINGS AND TAPPING OF HOUSE DRAIN, WASTE OR VENTILATION PIPES AND USE OF SADDLE HUB AND BEND ARE PROHIBITED.
  4. CLEAN-OUTS ARE REQUIRED UNDER THE FOLLOWING:
    - A. EVERY CHANGE IN HORIZONTAL DIRECTION
    - B. EVERY FIFTEEN METERS (15.00 m) IN HORIZONTAL RUN OF PIPES.
    - C. AT THE END OF ANY HORIZONTAL PIPE LINE.
  5. ALL PLUMBING WORKS SHALL BE DONE BY A LICENSED MASTER PLUMBER OR A LICENSED PLUMBING CONTRACTOR.
  6. ALL PLUMBING WORKS SHALL BE EXECUTED ACCORDING TO THE REQUIREMENTS OF THE PHILIPPINES PLUMBING CODE.

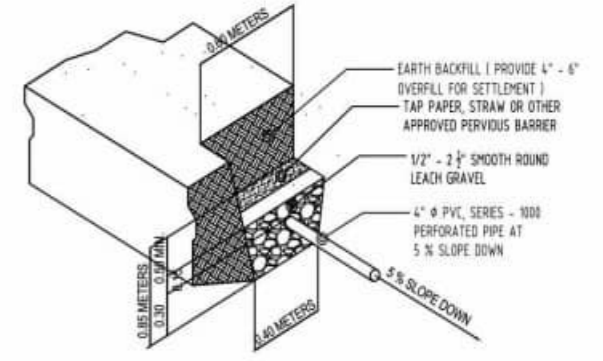


**PLAN**



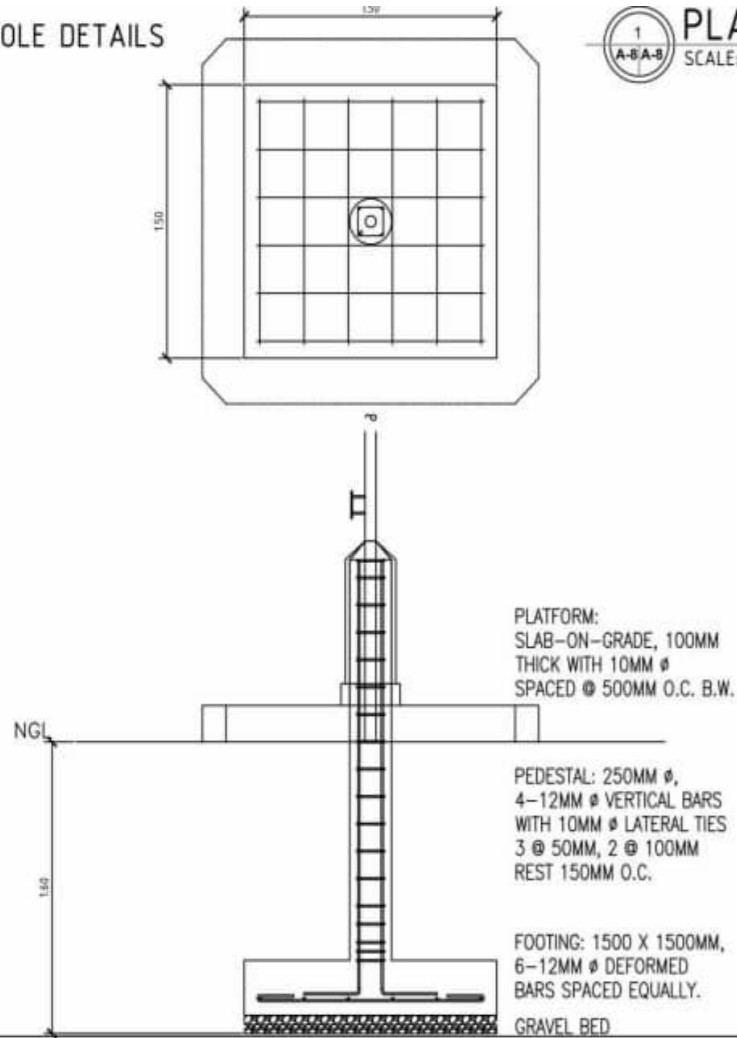
**SECTION SEPTIC TANK DETAIL**

5  
P.P.P-2  
SCALE: 1:30  
**DETAIL OF SEPTIC TANK**

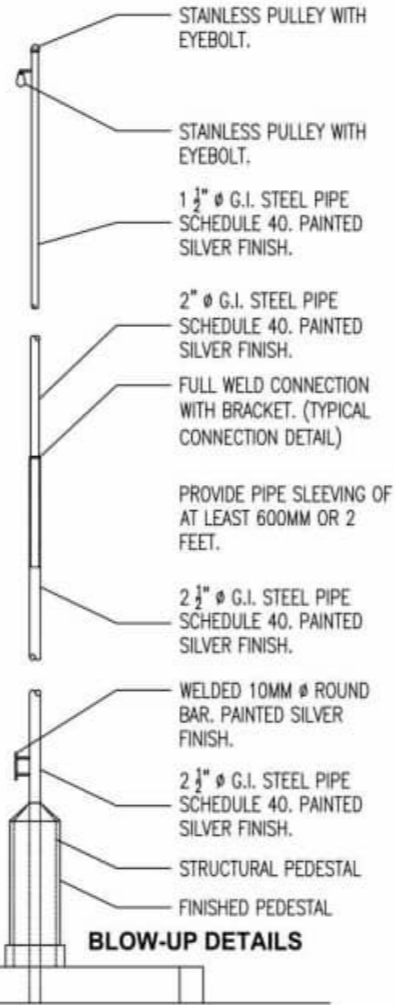


6  
P.P.P-2  
SCALE: N.T.S.  
**DETAIL OF DRAIN FIELD**

FLAG POLE DETAILS

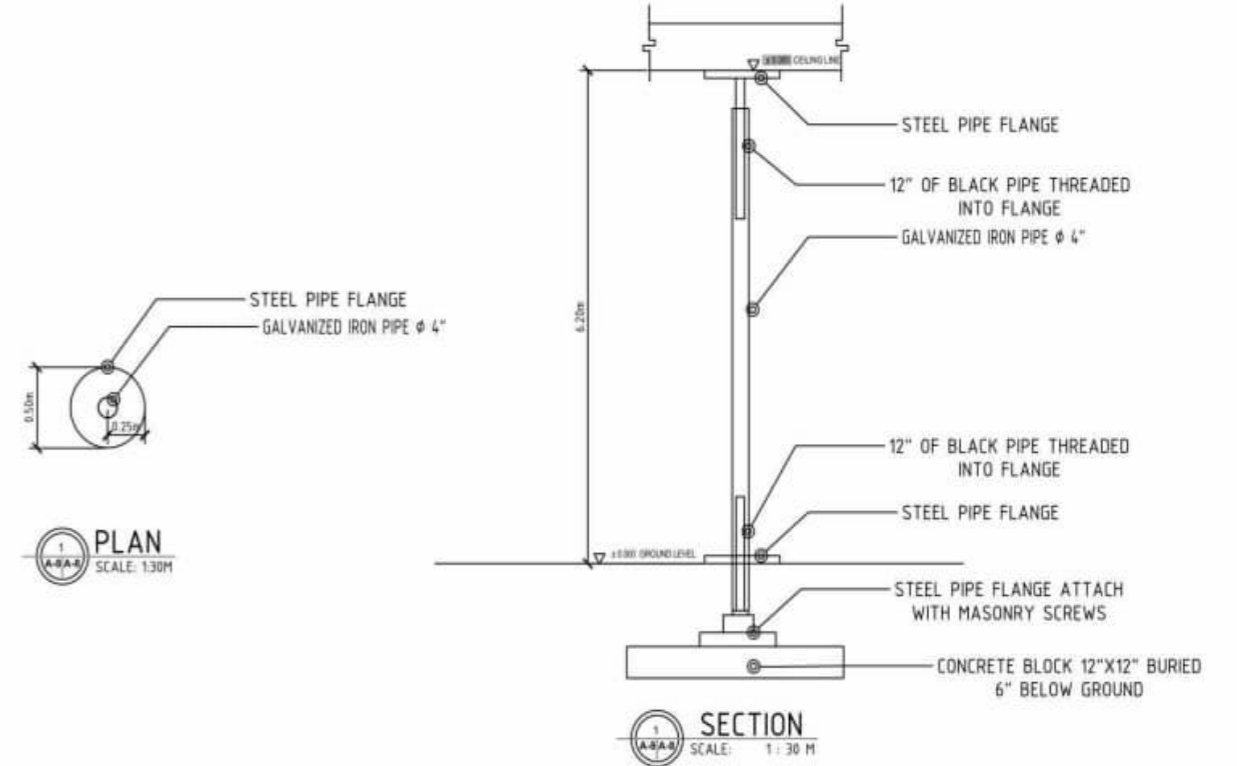


PLAN & DETAILS  
SCALE: NTS



BLOW-UP DETAILS

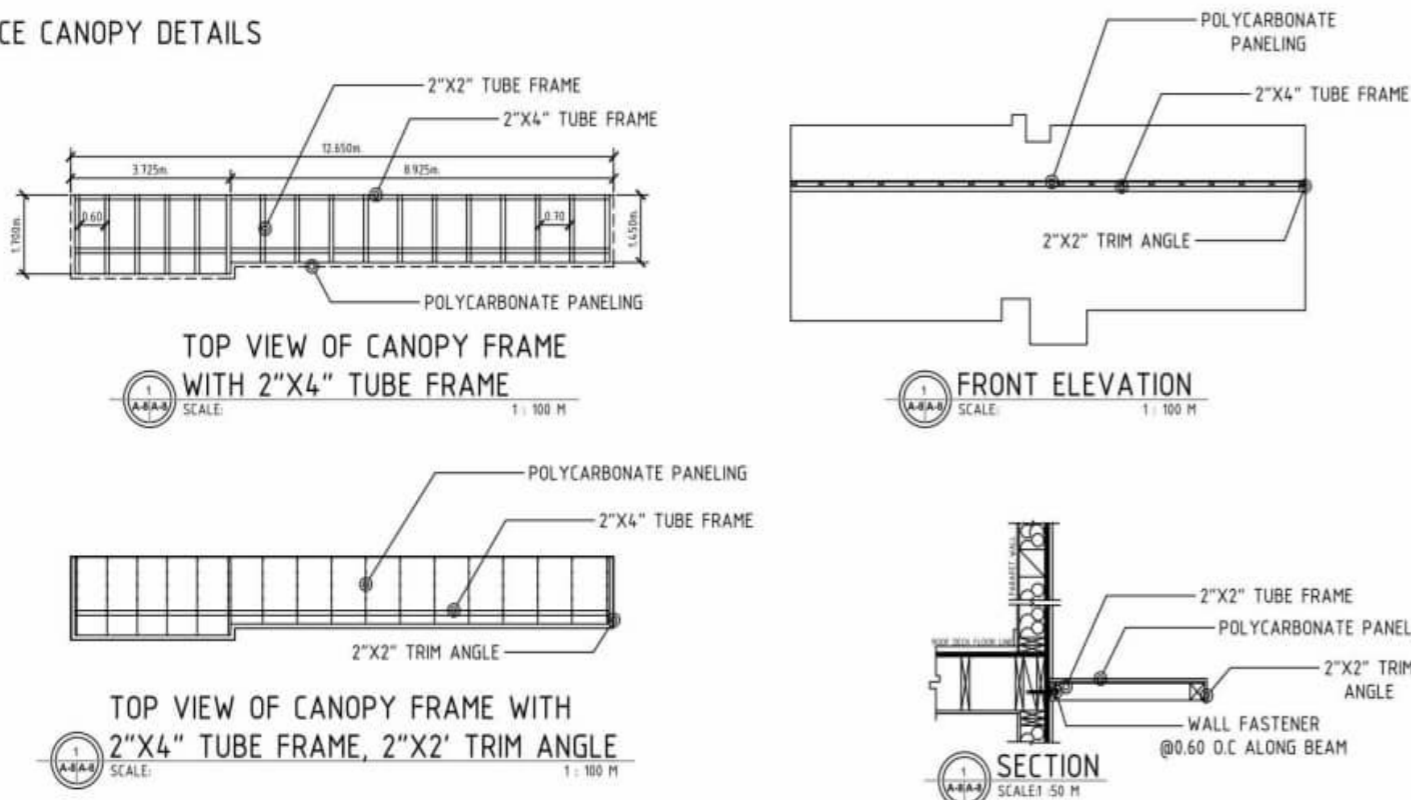
SLIDING POLE DETAILS



PLAN  
SCALE: 1:30M

SECTION  
SCALE: 1:30 M

ENTRANCE CANOPY DETAILS



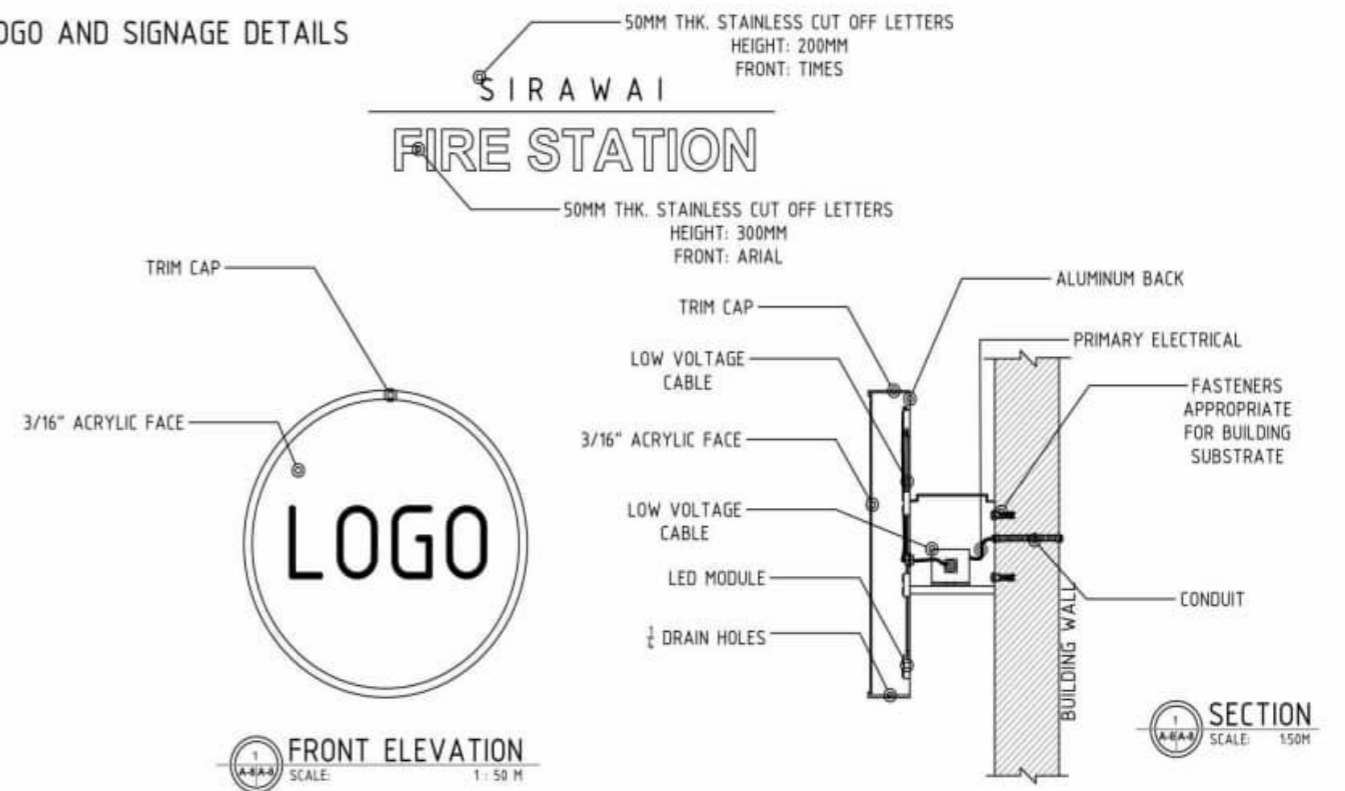
TOP VIEW OF CANOPY FRAME WITH 2\"/>

FRONT ELEVATION  
SCALE: 1:100 M

TOP VIEW OF CANOPY FRAME WITH 2\"/>

SECTION  
SCALE: 1:50 M

LOGO AND SIGNAGE DETAILS



FRONT ELEVATION  
SCALE: 1:50 M

SECTION  
SCALE: 1:50M



OWNER:  
**BUREAU OF FIRE PROTECTION  
REGION 9**



Project Title:  
**DESIGN & BUILD OF TIGBAO  
MUNICIPAL TYPICAL FIRE  
STATION WITH MEZZANINE &  
COVERED ROOF DECK**

Submitted By:  
**FERNANDO Y. PAMERON**  
President / Gen. Manager

Checked By:  
**SUPT REGGY A OLMEDO**  
Chief, Logistics Division

Approved By:  
**CSUPT RENATO BADONG MARCIAL, DSC**  
Regional Director

Sheet Contents:  
AS SHOWN

SHEET NO.  
**S-1**  
1-10